



SIT SCHOOL FOR
INTERNATIONAL
TRAINING
GRADUATE INSTITUTE

THE ORIGINAL **GLOBAL CAMPUS**

**Now
Offering**

**Doctorate in
Global Education
(EdD)**

PAGE 36

FULL-TIME GLOBAL PROGRAMS | HYBRID DEGREE FORMATS | CERTIFICATES
GROUNDED IN EXPERIENTIAL LEARNING SINCE 1932

GRADUATE.SIT.EDU



Please note that SIT will make every effort to maintain its programs as described. To respond to emergent situations, like COVID-19, however, SIT may have to change or cancel programs. Please see the SIT Graduate Institute website for the most up-to-date information. graduate.sit.edu

TABLE OF CONTENTS

PROGRAM FRAMEWORKS	2
FLEXIBLE DEGREE FORMATS	3
THIS IS SIT	4
PRESIDENT'S LETTER	5
CRITICAL GLOBAL ISSUES	6
SIT CAREER SERVICES	8
ALUMNI RELATIONS	10

GLOBAL MASTER'S PROGRAMS

CLIMATE CHANGE & GLOBAL SUSTAINABILITY	10
DEVELOPMENT PRACTICE	12
DIPLOMACY & INTERNATIONAL RELATIONS	14
GLOBAL HEALTH	16
HUMANITARIAN ASSISTANCE & CRISIS MANAGEMENT	18
INTERNATIONAL EDUCATION	20
SOCIAL JUSTICE & ADVOCACY*	22

PART-TIME HYBRID PROGRAMS

HUMANITARIAN ASSISTANCE & CRISIS MANAGEMENT	24
INTERCULTURAL SERVICE, LEADERSHIP & MANAGEMENT	26
INTERNATIONAL EDUCATION	28
PEACE & JUSTICE LEADERSHIP	30
SUSTAINABLE DEVELOPMENT	32
TESOL	34
DOCTORATE (EDD) IN GLOBAL EDUCATION	36

CERTIFICATE PROGRAMS

INTERNATIONAL EDUCATION	38
CONFLICT TRANSFORMATION ACROSS CULTURES (CONTACT)	39
ADMISSIONS	40
SCHOLARSHIP & FINANCIAL AID	40
AFFILIATIONS	41

**Accreditation pending*

The programs listed from pp. 12–39 include Example Career Paths, Example Practicum Placements, and Sample Research Areas:

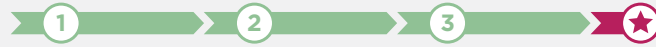
For Returning Programs—These are a selection of examples and possible options based on previous program alumni experiences.

For New Programs—These are a selection of examples and possible options SIT anticipates students on the program will be able to pursue.

PROGRAM FRAMEWORKS

FULL-TIME MASTER'S

1 YEAR



SEMESTER 1

Fall | Abroad

Meet your cohort, participate in orientation, and witness firsthand the challenges, successes, and perspectives of communities on the frontlines of critical global issues.*

SEMESTER 2

Spring | Abroad

During your second semester, deepen your understanding while immersing yourself in vastly different geographic and cultural contexts.**

SEMESTER 3

Summer | Practicum

Further the skills and experience you've gained through your coursework by working directly with an organization responding to these challenges—in a location of your choosing.***

CAPSTONE PRESENTATION

Virtual or Vermont

Share your capstone, a final project where you will reassess your theoretical knowledge in light of your professional experience.

* Some programs start with a two-week seminar in Washington, DC. See p. 14.

**Some programs travel to multiple locations during the second semester. See p. 12 and p. 14.

***The International Education MA includes a fourth semester. See p. 20.

PART-TIME HYBRID MASTER'S

2 YEARS



SUMMER RESIDENCY 1

2-3 Weeks
Vermont

Build bonds with your cohort during a brief but important residency on SIT's breathtaking Vermont campus.*

REMAINDER OF YEAR 1

Summer, Fall & Spring Semesters
Online

Begin deeply experiential studies with your cohort online, advancing your career and developing your knowledge without leaving your job or community.

SUMMER RESIDENCY 2

2 weeks
Vermont or Abroad

Reconvene with your cohort to advance your learning goals.

REMAINDER OF YEAR 2

End of Summer, Fall & Spring Semesters
Online

Continue growing your expertise and skills through your coursework, while applying what you have learned in the real-world setting of your work.

CAPSTONE PRESENTATION

Virtual or Vermont

Share your capstone, a final project where you will reassess your theoretical knowledge in light of your professional experience.**

* The Intercultural Service, Leadership & Management MA is a self-customized program that includes additional residency and research options, as well as a practicum. See p. 26.

** The capstone project for the Peace & Justice Leadership MA is completed as a group during the final spring semester. See p. 30.

PART-TIME HYBRID EdD IN GLOBAL EDUCATION

3 YEARS

SIT Graduate Institute offers an intensive, **part-time hybrid EdD in Global Education**, a three-year program with short-term summer residencies in Brattleboro, Vermont; blended and online coursework; and dissertation preparation and defense. [View p. 36 to learn more.](#)

FLEXIBLE DEGREE FORMATS

“

What connected us is our desire to make the world a better place.

”

ANESU DUNBAR MAZAZI MASUBE

MA in Sustainable Development

GRADUATE DEGREES WITH A GLOBAL EDGE

SIT degrees are designed for a wide range of students who have one goal in common: to become collaborative, globally minded professionals. Whether you choose to study TESOL or global health, climate change or peacebuilding, you'll develop the skills to listen and learn across communities and cultures to promote peace, social justice, and sustainability.

SIT offers MA degree formats for recent college graduates, mid-career professionals seeking to change tracks, and experienced professionals who want to sharpen their skills. Whether you're a full-time student just entering the field or a working professional, you'll find a program suited to your values and career goals.

ON SIT'S FULL-TIME GLOBAL MASTER'S PROGRAMS, you'll study a critical global issue in up to four countries. You'll witness firsthand the challenges, successes, and vastly differing perspectives of communities on the front lines of climate change, migration, development, diplomacy, education, or global health. During your final practicum semester, you'll work directly with an organization responding to these challenges.

SIT'S PART-TIME HYBRID PROGRAMS are designed for working professionals who want to earn a graduate degree while staying in their jobs and communities. Each program includes brief but important residencies on SIT's breathtaking Vermont campus, where you'll build important bonds with your cohort. Some degrees also include residencies abroad during the second program year to gain a more global experience.

With all SIT Graduate Institute programs, you'll develop theoretical knowledge, intercultural communication skills, and professional experience. You will examine issues from multiple perspectives as you learn from faculty, practitioners, fellow students, and your own experiences.

SIT is accredited by the New England Commission of Higher Education (NECHE) through its Commission on Institutions of Higher Education. Inquiries regarding the accreditation status should be directed to the administrative staff of the institution. Individuals may also contact:

Commission on Institutions of Higher Education

New England Commission of Higher Education

209 Burlington Road | Bedford, MA 01730-1433 | 781 271-0022 | info@neche.org

SIT has been approved to participate in the National Council for State Authorization Reciprocity Agreements.



THIS IS SIT

HISTORY & MISSION

School for International Training was officially established in 1964. However, its roots as the original global campus date back to 1932 when Dr. Donald Watt founded The Experiment in International Living, an immersive summer program which sends US students abroad to live with local host families, in order to expand their worldviews and improve cross-cultural understanding.

In the early 1960s, Sargent Shriver—the first director of the Peace Corps and an alumnus of The Experiment—called on The Experiment to train the earliest Peace Corps volunteers. This led to the establishment of SIT. In the late 1960s, SIT introduced programs in teaching English and, in 1971, the school awarded its first master's degree for the Program in Intercultural Management.

With those deep roots in multicultural understanding and international education, SIT today offers globally focused graduate-level programs through SIT Graduate Institute—including accredited degrees and certificate programs—and more than 80 undergraduate programs on seven continents through SIT Study Abroad and the International Honors Program.

In both its graduate institute and study abroad programs, SIT prepares students to be interculturally effective leaders, professionals, and citizens. In turn, SIT fosters a worldwide network of individuals and organizations committed to responsible global citizenship.

SIT is part of World Learning Inc., a nonprofit organization that works in more than 150 countries to enhance the capacity and commitment of individuals, institutions, and communities to create a more peaceful and just world through education, sustainable development, and exchange.

OUR APPROACH TO LEARNING

SIT programs are grounded in the experiential education model, where learning occurs at the nexus of theory and practice. Students prepare to become highly skilled practitioners who have a commanding knowledge of the theoretical basis of their profession; experience in the field; and a deeper awareness of their own capabilities, values, and ethics.

By challenging old paradigms, assumptions, and beliefs, experiential learning often leads to significant transformation while developing students' critical awareness and reflective skills.

SIT students are exposed to a wide range of cross-cultural perspectives. They benefit from the expertise, mentorship, networks, and support of faculty and staff who live and work around the world, including many who were born, raised, or educated in the country in which their program is based.

Our programs are developed within a framework of the most critical global issues—challenges that transcend borders to touch every human on the planet. (Read more on page 6.) On all full-time Global Master's programs, students complete a semester-long professional practicum with an approved organization, which may be in one of the program locations or elsewhere in the world. During this period—referred to as Reflective Practice—students remain engaged with faculty and other students and receive course credit as they integrate their knowledge and skills while working in a professional context. These practicum placements provide in-depth, hands-on learning, enhance résumés, and expand professional contacts.

LETTER FROM THE PRESIDENT



DR. SOPHIA HOWLETT, PRESIDENT

I'm so pleased to have this opportunity to introduce you to SIT Graduate Institute.

Since SIT was founded in 1964 as a training center for outbound Peace Corps volunteers, our institution has been grounded in social justice and guided by the belief that we learn best through experience and engagement followed by deep reflection. These values continue to be the rudder for SIT as we navigate the changes of our time with concentrations and program formats that meet the needs of our learners and the challenges of our world.

“

You will join a community that shares a common set of values that sustain and guide their lives.

”

Experiential learning is at the heart of all of our program models, including our part-time hybrid format, in which you'll meet and continue to interact with your cohort throughout your program. We have also pioneered a full-time global master's degree format, which gives you the opportunity to live with and learn from experts and communities on the frontlines of some of the world's most pressing Critical Global Issues. In addition, SIT now offers

an EdD in Global Education, the institution's first doctoral degree, as well as the first degree of its kind offered by a US-based higher education institution. This advanced degree draws from our unique brand of in-depth, reflective practice and intensive research training. Regardless of which program you choose, you will join a community that shares a common set of values that sustain and guide their lives. These values—community, intercultural understanding, sustainability, social inclusion, and justice—become the foundation upon which you, our learners, become leaders.

A handwritten signature in black ink, reading "Dr. Sophia Howlett". The signature is written in a cursive, flowing style with a long horizontal line extending from the end.

A FRAMEWORK OF CRITICAL GLOBAL ISSUES

SIT develops our programs within a framework of the most critical global issues of the day so that the next generation of leaders has the expertise and intercultural understanding they need to engage all identities, perspectives, and cultures in respectful, enduring, and meaningful responses.



CLIMATE AND ENVIRONMENT

Few contemporary challenges are as urgent or contested as climate change and its impact on our environment. The collective efforts of scientists, scholars, politicians, activists, indigenous communities, and concerned citizens are needed to gauge and mitigate environmental and social impacts. Our programs reflect this diversity of perspectives. Natural science-based programs explore global hotspots, with a focus on ecology, biodiversity, and conservation. Social science-based programs emphasize environmental justice. Students in all programs develop the knowledge and skills to become leaders in shaping environmental policies and balancing ecological outcomes for an uncertain future.



DEVELOPMENT AND INEQUALITY

Pervasive inequality impacts individuals and communities worldwide. Where historic development practices have fallen short of lasting change, local responses offer innovative solutions to build more sustainable futures. Our programs explore these efforts to balance ecological sustainability, economic opportunity, and gender equity alongside the complexities of growth-centric development. Students become deeply aware of what it means to confront inequality as they witness firsthand the work of people engaged in creating more just and fair societies.



EDUCATION AND SOCIAL CHANGE

Unequal access to quality education inhibits the potential of millions of girls and women, indigenous populations, people with disabilities, displaced persons and refugees, and communities living in conflict areas. Intercultural, international-based education connects and engages communities as it values differences, confronts inequality, and recognizes common struggles. Our programs develop reflective educational leaders who can open up the world to new generations, advocate for local agency and intercultural communication, and support transformative settings where self-empowerment and human potential can flourish.



IDENTITY AND HUMAN RESILIENCE

The human condition is in change. Human rights and identity. War. Climate change. Economic disparities. Discrimination. Indigenous and marginalized individuals are exploring what it means to be different and equal in a complicated world, and those under pressure from their environment are on the move with mixed migration challenging national, communal, and personal identities. Our programs explore the human condition and the crisis of belonging in an increasingly complex and mobile world. Students gain critical insight on the phenomena of resilience and resistance through listening to the voices of indigenous people and marginalized groups.



GEOPOLITICS AND POWER

Power shifts and power plays challenge outmoded geopolitical models that are failing to ensure global security and stability. Disruptions, though tumultuous, create spaces to interrogate the politics of the past and construct alternative systems of power. Our programs explore the many shocks to the system that give rise to regional independence movements, new forms of populism rife with old nationalisms, and illiberal democracies, and ask, “What next?” Students gain nuanced perspectives from leading political scientists, diplomats, policymakers, and civic activists who are engaged in reimagining our political future.



GLOBAL HEALTH AND WELL-BEING

Healthcare science and health systems worldwide are adapting, expanding, or straining to address the complex and varying needs of vulnerable and underserved populations: children, women, gender minorities, refugees and displaced persons, the elderly, the mentally ill, and the economically disadvantaged. Our programs explore the potential of using both indigenous and new science and technology to support vulnerable populations as well as the limitations and possibilities of contrasting health policy initiatives at the intersections of regional and local governments, global and community organizations, and traditional and indigenous approaches. Students examine the medical and social determinants of health and well-being in urban and rural settings to understand how health carers, policies, and programs can best support those in dire need.



PEACE AND JUSTICE

Conflict—incited by structural inequality, migration, identity and exclusion, resource scarcity, and historical trauma—manifests through war, revolution, and other forms of violent and coercive mobilization. In the face of this reality, the prospect of long-term peace often seems unattainable. Our programs explore how changemakers manage conflict constructively, balance reconciliation and justice, and support post-conflict remembrance and healing. Students evaluate the root causes of conflict to develop evidence-based strategies designed to transform our world into one that is more peaceful and just.

SIT CAREER SERVICES

We support graduate students and alumni in achieving their professional goals through a combination of independent and interactive services, including Career Exploration and Planning and Career Coaching. We also provide original and curated resources for jobseekers on our website, including job boards, podcasts, e-books, blogs, and more.

CAREER EXPLORATION AND PLANNING

This is a recursive process that involves:

- Engaging in self-assessment and reflection
- Exploring career paths
- Developing an action plan
- Honing job-seeking skills

To guide students in this process, we endorse ImaginePhD, a robust platform powered by the Graduate Career Consortium. This free and confidential career exploration and planning tool:

- Assesses career-related skills, interests, and values
- Explores career paths appropriate to your discipline
- Creates self-defined goals
- Maps out next steps for career and professional development success

CAREER COACHING

To supplement the Career Exploration and Planning process, we offer individual career coaching in job search strategies and skills. Our certified Career Coach assists with:

- Resume, cover letter, and LinkedIn profile review
- Interview practice
- Networking
- Salary negotiations

Sessions last 50-minutes and can be conducted synchronously (WebEx video call) or asynchronously (feedback via email).

ALUMNI RELATIONS

Our alumni network is a treasured asset. After more than 85 years of operations, the World Learning Inc. family of alumni is now 130,000 people strong and located across the world, with over 68,000 alumni from SIT alone.

In Alumni Relations, we create opportunities for alumni to engage with the institution, and with each other, through special events throughout the year—our way of giving back to you. We also help our alumni achieve their goals and celebrate their successes. We primarily support alumni by sharing resources, news, and opportunities, and by building connections and fostering a community linked by our common SIT identity. In doing so, we seek to nurture our shared commitment to responsible global citizenship.

We encourage you to keep your contact information with us current so that we can inform you of upcoming events and other updates. To update your contact information, search for fellow alumni, or to be added to our alumni communications, please contact alumni@sit.edu. To get involved with SIT, connect with alumni events, or to volunteer for alumni outreach opportunities, please contact alumni.relations@sit.edu.



“

A key benefit of my SIT experience was developing insights into the challenges of a multicultural society in the public sphere, which helped me in my work and worldview ...

”

JAIME TINCHER

SIT Conflict Transformation program

*Deputy Mayor
St. Paul, Minnesota*



“

I had faith that SIT's many years of experience meant the program would be well-run and thoughtful.

”

CASS MADDEN

*MA in Climate Change and Global Sustainability
Senior Researcher, Asociación ANDES
Cusco, Peru*



“

I really liked the experience-oriented learning—learning by doing—and the opportunities to collaborate with colleagues from other countries.

”

JESSE ROUTTE

MA in Sustainable Development

*Co-owner and CEO, Three Stones International
Kigali, Rwanda*



CRITICAL GLOBAL ISSUES

Climate & Environment



DURATION

12 months



CREDITS

36



INSTRUCTIONAL SITES

Ísafjörður, Iceland
Zanzibar, Tanzania
Practicum



GLOBAL MASTER'S CLIMATE CHANGE AND GLOBAL SUSTAINABILITY

Climate change is advancing at rates even faster than anticipated, and the need for creative, courageous advocates and policymakers is growing with it. On this program you will travel the globe—from the arctic to the tropics—to examine the policies and innovative responses that communities, NGOs, and governments are developing to combat climate change.

In Iceland, you'll be introduced to climate science, assessment, and policy. You'll learn about environmental governance and witness Iceland's changing geopolitical role as a leader in energy innovation.

In Zanzibar, you'll explore agriculture and aquaculture, food chains and markets, water and food security, and government policies on coastal urban planning. You'll also examine the challenges of balancing natural resource management with the need to promote sustainable livelihoods.

Round out your program with a semester-long practicum at an organization anywhere in the world to practice what you've learned in a professional setting while adding real-world experience to your résumé.

This program is designed for those who want to make a difference in sustainability, ecological conservation, and community livelihoods. An advanced knowledge of science is not required; you will learn the key concepts of climate science on the program.

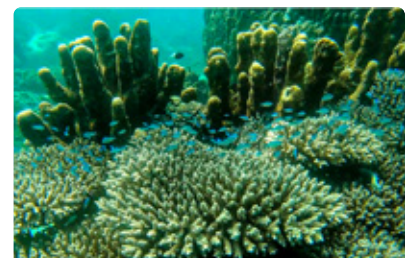
“

Going back to school has been the best decision I have made in my life.

”

AMAVIE CLEMENT

*MA in Climate Change and
Global Sustainability*





EXAMPLE CAREER PATHS

Climate and Environmental Science
 Environmental Monitoring and Climate Change Mitigation
 Community Development and Resilience
 Climate and Environmental Policy and Advocacy
 Sustainability Consultancy



PROGRAM CHAIR

Dr. Richard Walz completed his PhD at the University of Florida, where his doctoral research produced a history of human settlement and environmental change for the region between the Swahili Coast and the Eastern Arc Mountains of northeastern Tanzania. His expertise concerns the anthropology and historical ecology of eastern Africa and the western Indian Ocean. His ongoing and published research addresses long-term social and environmental change, the application of climate proxies, and the effects of contemporary climate change on communities and ecosystems in East Africa and the western Indian Ocean. Richard has won multiple teaching awards and internal and external research funding for projects in the Indian Ocean region. He also directs SIT Study Abroad programs in coastal ecology and climate change in Tanzania-Zanzibar.



HALLMARK COURSES

Science of Global Climate Change
 Climate Change in the Arctic: Methods and Impact Assessment
 Human-Climate Interface II: Water, Food, and Climate Economics in Zanzibar
 Climate Change and Sustainable Livelihoods in the Indian Ocean Region
 International Environmental Policy and the Challenge of Climate Diplomacy



EXAMPLE PRACTICUMS

Climate Change and Indigenous Rights, Oxfam America, Washington, DC
 Forest Incomes for Environmental Sustainability, Monrovia, Liberia
 International Arctic Research Center, University of Alaska, Fairbanks, Alaska
 WaterStep, Quito, Ecuador
 EcoConsult / Hydroponic Agriculture Development Project, Amman, Jordan
 Office of Climate Change, Sustainability, and Resiliency, City and County of Honolulu, Hawai'i





CRITICAL GLOBAL ISSUES

Development & Inequality



DURATION

12 months



CREDITS

36



INSTRUCTIONAL SITES

Quito, Ecuador
Kampala, Uganda
Lilongwe, Malawi
Practicum



GLOBAL MASTER'S DEVELOPMENT PRACTICE

The complex and interconnected global challenges of widening economic inequality, health crises, natural resource degradation, climate change, and political and ethnic conflict have created a demand for a new generation of innovative and multidisciplinary development practitioners. Grounded in experiential, place-based learning, SIT's one-year Master's in Development Practice (MDP) equips you with the skills to identify and address development challenges and multisector solutions for the 21st century.

Other graduate programs in development focus on a specialization within a particular discipline, limiting the potential for systemic, cross-cutting, and interdisciplinary training. SIT's unique MDP incorporates theory, practice, and leadership development across social sciences, natural sciences/ecology, health sciences, and management. Through rigorous academic training and immersive fieldwork alongside experienced faculty, development practitioners, and local community members, the program bridges systems thinking and community-driven approaches to research, analytics, advocacy, and management.

Build on SIT's longstanding global partnerships to complete your program with a field practicum in the United States or abroad that provides service to a host organization while fulfilling your academic requirements. As a graduate, you'll be prepared to integrate policy, scholarship, ethics, participatory practice, capacity building, and lifelong learning to achieve sustainable development goals.

“

A new generation of innovative and multidisciplinary development practitioners is imperative to achieving equitable, just, and sustainable development.

”

DR. JOSEPH LANNING

Program Chair





EXAMPLE CAREER PATHS

Foreign Service
Food and Nutrition Security
Sustainable Development
Monitoring and Evaluation
Public Health



HALLMARK COURSES

Foundations of Sustainable Development
Monitoring, Evaluation, and Learning
Design Thinking, Technology, and Development
Development Economics
Gender, Agriculture, and Climate Change



EXAMPLE PRACTICUMS

Policy Advocacy
Women and Development
Water, Sanitation, Hygiene
Forest Conservation



PROGRAM CHAIR

Dr. Joseph Lanning is an economic and agricultural anthropologist whose research focuses on agricultural decision-making and food insecurity, including the agricultural livelihoods of rural Malawians. He holds a PhD in anthropology from the University of Georgia. Formerly, he was a US Peace Corps volunteer who worked in the areas of public health, irrigation, and agroecology. He is also an alumnus of SIT Study Abroad in Kenya. Joe has nearly two decades of experience teaching and managing undergraduate and graduate-level anthropology research methods field schools in Malawi and Samoa. He is a managing partner for a small-scale agroecological demonstration farm in Malawi and directs the SIT Study Abroad comparative International Honors Program Food Systems: Agriculture, Sustainability, and Justice.





CRITICAL GLOBAL ISSUES

Geopolitics & Power



DURATION

12 months



CREDITS

34



INSTRUCTIONAL SITES

Washington, DC

Geneva, Switzerland

Durban and Johannesburg,
South Africa

Practicum



“

A special feature of the degree is the traveling seminar, in which students will learn directly from senior foreign affairs leaders working in government, NGOs, and intergovernmental organizations in each of the three regions.

”

DR. BRUCE W. DAYTON

Program Chair

GLOBAL MASTER'S DIPLOMACY AND INTERNATIONAL RELATIONS

Prepare for a career in international, regional, and global affairs; diplomacy; or the Foreign Service. Learn about the structure of the global political system and the possibility and limits of multilateral diplomacy to address the most critical global issues facing the planet.

Courses in the United States, Europe, and South Africa will provide you with both western and non-western perspectives on international relations and an appreciation of the complexities of negotiating across cultural, socio-economic, and political differences.

A special feature of the degree is the Traveling Seminar in which you learn directly from senior leaders in government, NGOs, and intergovernmental organizations in each region.

Gain skills in negotiation, diplomatic leadership, crisis management, strategic decision making, collaborative problem solving, and applied research. Graduates will be positioned to work with government agencies, NGOs, and intergovernmental organizations, particularly in situations of conflict, crises, and rapid change.

Through our broad global network, SIT will work with you to find meaningful practicum positions with NGOs, intergovernmental organizations, and other entities. You may also work with your advisor to develop your own practicum.





EXAMPLE CAREER PATHS

Foreign Service
Public Diplomacy
Conflict and Crisis Management
Nongovernmental and
International Organizations



HALLMARK COURSES

Foundations in Diplomacy and
International Relations
Strategic Foresight and Scenario-Building
The Future of Europe
Continental Solidarity and the African Union



EXAMPLE PRACTICUMS

United Nations Foundation
African Centre for the Constructive
Resolution of Disputes
Center for Strategic and International Studies
US Agency for International Development



PROGRAM CHAIR

Dr. Bruce W. Dayton has been active in conflict transformation, crisis management, and leadership training for more than 20 years as a practitioner, researcher, and educator. His research interests include peacebuilding, mediation, dialogue, crisis management, and leadership. In addition to three books, he has published numerous articles on conflict, crisis management, and leadership. He has provided training to leaders in more than a dozen countries and has designed and facilitated multi-stakeholder dialogues around energy and environmental conflicts. Bruce earned his PhD from Maxwell School of Citizenship and Public Affairs at Syracuse University, where he went on to serve as associate director of the Moynihan Institute of Global Affairs, research co-director of the Program for the Advancement of Research on Collaboration and Conflicts, and research professor. He chairs SIT's CONTACT Summer Peacebuilding Program.





CRITICAL GLOBAL ISSUES

Global Health



DURATION

12 months



CREDITS

36



INSTRUCTIONAL SITES

Milimani and Kisumu, Kenya
New Delhi, India
Practicum



“

Global health and provision of healthcare systems—which encompass institutions, organizations, and resources—have become a serious and urgent priority, especially due to migration, natural disasters, and failing governance structures.

”

DR. AZIM KHAN *and*
DR. STEVE WANDIGA

Program Co-Chairs

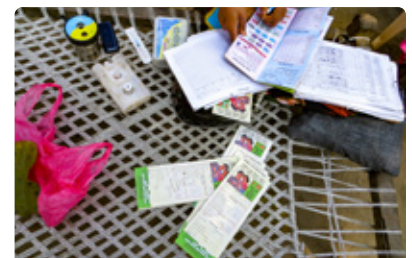
GLOBAL MASTER'S GLOBAL HEALTH

Global public health issues pose major challenges to governments and health services providers. Mass migration, natural disasters, and failing governance structures have heightened the need for professionals able to enhance healthcare access; manage the delivery of robust disease-specific programs, drugs, and medical supplies; and develop functioning healthcare systems.

On this program you will gain comparative perspectives and professional skills in health policy, design, administration, and management in countries with serious health challenges and diverse delivery models. Kenya has a high burden of tuberculosis and TB/HIV coinfection and a huge burden of infectious and non-communicable diseases. SIT Kenya in Kisumu has a strong collaboration with Kenya Medical Research Institute at the Centre for Global Health Research, which also hosts the US Centers for Disease Control and Prevention (CDC).

Likewise, in New Delhi, a city with a burgeoning population and diverse health systems, SIT India has an excellent pool of resources, organizations, and experts including the South East Asia Regional Office of the World Health Organization. You will visit healthcare delivery institutions in rural and urban India and hear from health workers and community leaders about healthcare delivery, policy, design, administration, and management.

In your final semester, self-design a practicum in a location of your choosing based on your academic and professional goals. Our faculty will help guide you through SIT's extensive network of partners across continents.





EXAMPLE CAREER PATHS

Global Health Consultant
Hospital Manager
Epidemiologist
Health Policy Analyst



HALLMARK COURSES

Fundamentals in Global Health
Epidemiology of Communicable and Non-communicable Diseases
Indian Health Policy, Design, Systems, and Management
Social Determinants, Equity, Reproductive and Child Health



EXAMPLE PRACTICUMS

Kenya Medical Research Institute (KEMRI)—
Centre for Global Health Research (CGHR)
Kenya Ministry of Health or County
Department of Health
South East Asia Regional Office of the World
Health Organization (WHO) in India
Médecins Sans Frontières (MSF) in India



PROGRAM CO-CHAIR

Dr. Azim Khan earned a PhD in health, gender, and human rights from Aligarh Muslim University, where his thesis focused on sex-selective abortions and prenatal diagnostic techniques. He was a recipient of the Ford Foundation International Fellowship; and a Fellow of the Royal Society for Public Health, UK, and is a life member of the Indian Public Health Association. In 2007, he was named a Scholar of Peace Fellow by the Foundation for Universal Responsibility of the Dalai Lama. He has been an academic director for SIT since 2008.



PROGRAM CO-CHAIR

Dr. Steve Wandiga is a senior research officer at Kenya Medical Research Center in Kisumu. He serves on the steering committee of the East African Consortium for Clinical Research, co-chairs the TB Stakeholder Community Engagement Working Group, and is a member of the TB Clinical Trials Infrastructure Working Group. He has also coordinated the East Africa Healthy Pregnancy, Birth, Growth, and Development Knowledge Initiative. He is managing editor of East African Science journal within the East African Health Research Commission. Steve holds a PhD in medical research from Ludwig Maximilian University, Munich, Germany.





CRITICAL GLOBAL ISSUES

Identity & Human Resilience



DURATION

12 months



CREDITS

36



INSTRUCTIONAL SITES

Amman, Jordan
Kampala, Uganda
Geneva, Switzerland
Practicum



“

This MA program equips aspiring humanitarian and emergency professionals with the skills to lead effective, innovative humanitarian interventions. Students will gain a global perspective on humanitarian response and crisis management through field-based learning in Jordan, Uganda, and Switzerland.

”

DR. BAYAN ABDULHAQ

Program Chair

GLOBAL MASTER'S HUMANITARIAN ASSISTANCE AND CRISIS MANAGEMENT

Unprecedented levels of conflicts and climate change have displaced more than 68 million people worldwide and created a high demand for professional aid workers trained to deliver humanitarian responses in line with legal, ethical, and professional guidelines.

On this groundbreaking program, you will spend one semester in Jordan and the second in Uganda—countries that together host nearly three million refugees but take starkly different approaches to their care. You will come face to face with real-world challenges and people and organizations on the ground including the United Nations High Commission for Refugees, the United Nations Relief and Works Agency, the World Health Organization, and the United Nations International Children's Emergency Fund. During a 10-day field visit to Geneva, headquarters of many UN aid agencies, you will focus on humanitarian policy and advocacy.

Throughout this program, you will grapple with the major critiques of humanitarian action, learn ethically sound research methods, identify needs and gaps in delivery systems, and provide evidence-based recommendations for interventions and responses in a range of humanitarian sectors.

During your final semester, you will conduct a practicum with a UN agency, intergovernmental organization, international development agency, or NGO to gain valuable experience and enhance your skills in an international environment.





EXAMPLE CAREER PATHS

Crisis and Emergency Management
Nonprofit and NGO Management
Humanitarian Diplomacy and Advocacy
Relief Work
International Development



HALLMARK COURSES

Issues in Humanitarian and Refugee Studies
Humanitarian Policy, Diplomacy, and Advocacy
Crisis Management and Leadership in Humanitarian Response
International Humanitarian and Refugee Law, Standards, and Principles



EXAMPLE PRACTICUMS

Save the Children
Higher Population Council
Jordan Hashemite Fund for Human Development



PROGRAM CHAIR

Dr. Bayan Abdulhaq leads SIT's undergraduate programs in refugee health and humanitarian action in Jordan, where she works with a large network of NGOs including Jordan River Foundation, Jordan Health Aid Society, and JOHUD to design learning opportunities and reciprocity projects. Bayan has taught at the University of Jordan and the University of Petra and has extensive experience in educational quality assurance. She served as board member and executive director of AROQA and as a higher education consultant in Bahrain. She holds a PhD in pharmaceutical sciences from King's College London.



ASSOCIATE CHAIR

Dr. Charlotte Karungi Mafumbo earned a PhD from the University of Cape Town. She also holds an MA in international studies from the University of Sydney, a certificate in gender and conflict studies from Hannover University, a diploma in social conditions and policies from the University of Copenhagen, and a BA in history and international organization from Makerere University. She was a 2012 Global South Scholar at the Graduate Institute of International and Development Studies in Geneva and has worked as a lecturer at Makerere University.





CRITICAL GLOBAL ISSUES
Education & Social Change



DURATION
16 months



CREDITS
38



INSTRUCTIONAL SITES
Ho Chi Minh City, Vietnam
Santiago, Chile
Practicum



“

I use everything from program design to intercultural communications.... But beyond that, I'm in close contact with my SIT cohort. They're really great for bouncing ideas around. I feel like I gained a whole network of advisors. I feel lucky to have pursued this degree.

”

ALEX STONE

*MA in International Education
Founder, The Amandla Project*

GLOBAL MASTER'S INTERNATIONAL EDUCATION

Today's world is faced with a wide range of challenges that have one commonality: the need for problem-solvers able to function across difference. International educators work in formal and nonformal systems helping all age groups learn to work interculturally.

This program brings you to two education hubs, Ho Chi Minh City, Vietnam, and Santiago, Chile, for one semester each of full-time study. These cities offer unique and diverse histories, cultures, and educational systems. You will learn intercultural communication, program management skills, and how education contributes to post-conflict development. You will visit nonprofit organizations, teachers' unions, youth exchange programs, ministries, embassies, and program providers. On four-day excursions you'll learn about national education policy in Vietnam's capital, Hanoi and indigenous education at a regional capital in Chile.

You will then spend two semesters completing a practicum and conducting independent research. By the completion of this program, you will be familiar with educational policies and practices in three to four countries (depending on the site of your practicum), including the United States, and you will have the skills and understanding needed to build a successful career as a socially minded international educator. This program is targeted toward aspiring and new professionals with up to five years of related experience.





EXAMPLE CAREER PATHS

Exchange Program Management
Advising
Program Design
International Education Development



PROGRAM CHAIR

Dr. Sora Friedman started working in international education in 1984, focusing on the preparation of new professionals, management training, exchange program management, public diplomacy, and international policy advocacy. She currently serves as a peer reviewer and consultant for journals and professional training programs. In 2019, she co-authored *Careers in International Education: A Guide for New Professionals*. Previously, she has chaired NAFSA's Teaching, Learning, and Scholarship Knowledge Community; served on NAFSA's New England regional chair-stream; been a member of CISabroad's Board of Advisors; and chaired NAFSA's Trainer Corps and Training Coordination Subcommittee. In 2015, she received the NAFSA Region XI James Leck Award for Distinguished Service. She received her PhD in cultural studies from George Mason University.



HALLMARK COURSES

Educational Practice and Policy in Vietnam/Chile
International Education Design, Delivery, and Evaluation
Practitioner Inquiry
Reflective Practice



EXAMPLE PRACTICUMS

Youth Exchange Program Associate
Study Abroad Counselor
International Student Adviser
Refugee Programs Support Staff
Community Education Trainer





CRITICAL GLOBAL ISSUES

Peace & Justice



DURATION

12 months



CREDITS

34



INSTRUCTIONAL SITES

Belgrade, Serbia

Buenos Aires, Argentina

Practicum



“

Graduates will have a broad, cross-cultural understanding of social justice, a type of knowledge and sensitivity that today's world requires.

”

ANA LAURA LOBO

Associate Chair

GLOBAL MASTER'S SOCIAL JUSTICE AND ADVOCACY*

LAUNCHING IN FALL 2023

Movements today—in the United States and around the world—are confronting racism and growing inequalities; the oppression of Black, Indigenous, and other people of color; gender equity; environmental collapse; populism, rising nationalism, and neoliberalism; and other critical challenges. With this comparative program, SIT will prepare you for a career advancing social justice on an international, regional, or local level. In a globalized world, this degree will put you in an advantageous position to address some of today's most pressing issues.

Through SIT's global, experiential framework, you will examine southeast and central Europe and Latin America, where social rights are entangled with challenges for democracy and local and regional dynamics, embedded in past social and political struggles and informed by current events.

Spend your first semester in Belgrade, Serbia, the largest urban space in Southeast Europe and home to dynamic, new social movements and activists groups demanding social change. Spring semester takes you to Buenos Aires, Argentina, where movements have sparked a “human rights cascade” after the return to democracy and continue to drive social change throughout the Southern Cone.

Your final semester involves a professional practicum and capstone research in close consultation with your faculty advisor to ensure alignment with your personal career goals.

**Accreditation pending*





EXAMPLE CAREER PATHS

Nonprofit and NGO Management
Community Organizing
Public Policy Analysis
Political Campaigns
Social Entrepreneurship



HALLMARK COURSES

Digital Activism and Advocacy:
Actions for Social Justice
Critical Approaches to Activism,
Advocacy, and Policy Change
Socio-Environmental Conflicts and
Alternatives to Neo-Extractivism
Citizenship in Southeast Europe:
Divided Societies and Unequal Cities
Social Justice, Rights, and
Advocacy in Argentina



SAMPLE RESEARCH AREAS

Racial Justice and Indigenous Rights
Social Movements as Civic Engagement
Democracy and Citizenship Rights after
War or Dictatorship
Digital Activism and Advocacy
LGBTQ+ Rights, Gender Equality
The Right for the City



PROGRAM CHAIR

Dr. Orli Fridman holds a PhD from George Mason University's School for Conflict Analysis and Resolution. Her research focuses on peace studies and memory studies with an emphasis on comparative conflict studies. She has published extensively about memory politics and memory activism. Her recent publications include "Conflict Memory and Memory Activism: Dealing with Contested Pasts" (2020) in *The Palgrave Encyclopedia of Peace and Conflict Studies* and "Peace formation from below: The "mirëdita, dobardan!" festival as an alternative to everyday nationalism" (2020) in *Nations and Nationalism*.



ASSOCIATE CHAIR

Ana Laura Lobo has an MA in social investigation from the University of Buenos Aires (UBA). She completed doctoral work at UBA and the National University of San Martin, and postgraduate research at UBA's Gino Germani Research Institute. Her research interests include social justice and human rights, and social transformation using art and culture. She has been an adjunct professor for UNICEF and a lecturer at UBA. She teaches a Peace Culture and Human Rights seminar chaired by Nobel Peace Prize laureate Adolfo Perez Esquivel.





CRITICAL GLOBAL ISSUES

Identity & Human Resilience



DURATION

24 months



CREDITS

36



INSTRUCTIONAL SITES

Vermont
Madrid and Tarifa, Spain
Online



“

We designed this hybrid degree program to offer working professionals an opportunity to build the skills and abilities needed to effectively deploy humanitarian and crisis management programs without having to leave their job or community.

”

DR. BAYAN ABDULHAQ

Program Chair

PART-TIME HYBRID MASTER'S HUMANITARIAN ASSISTANCE AND CRISIS MANAGEMENT

Natural disasters are worsening with climate change and have compounded with violent conflicts, famines, and other global crises to produce complex emergencies and an unprecedented number of vulnerable communities worldwide.

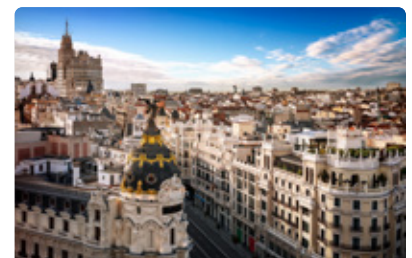
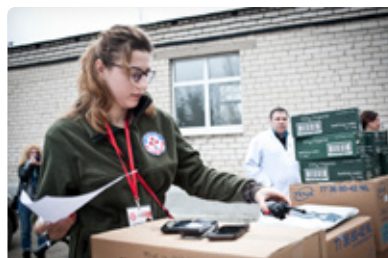
Humanitarian action and crisis management professionals are needed now more than ever. Through this interdisciplinary program you will gain a foundation in the legal and professional principles and standards governing the field, as well as major critiques.

You will begin the program with a two-week residency on SIT's Vermont campus, where you will get to know your cohort and faculty. Through online study, you will then work closely with your cohort to advance your knowledge and skills.

In your second year, a residency abroad will enable you to observe and participate in the design and implementation of humanitarian interventions through site visits and experiential learning activities. You will also have the opportunity to interact with aid workers and communities impacted by disasters.

In your final two semesters, you will complete a practicum and capstone project with a humanitarian aid or development organization. Through this experience, you will master ethically and culturally appropriate field practice and research skills.

You will leave the program ready to lead principled, inclusive, and professional interventions in a range of humanitarian sectors.





EXAMPLE CAREER PATHS

Crisis and Emergency Management
Nonprofit and NGO Management
Humanitarian Diplomacy and Advocacy
Relief Work
International Development



HALLMARK COURSES

Issues in Humanitarian and Refugee Studies
Humanitarian Policy, Diplomacy, and Advocacy
Crisis Management and Leadership in Humanitarian Response
International Humanitarian and Refugee Law, Standards, and Principles



EXAMPLE PRACTICUMS

Save the Children
Higher Population Council
Jordan Hashemite Fund for Human Development



PROGRAM CHAIR

Dr. Bayan Abdulhaq leads SIT's undergraduate programs in refugee health and humanitarian action in Jordan, where she works with a large network of NGOs including Jordan River Foundation, Jordan Health Aid Society, and JOHUD to design learning opportunities and reciprocity projects. Bayan has taught at the University of Jordan and the University of Petra and has extensive experience in educational quality assurance. She served as board member and executive director of AROQA and as a higher education consultant in Bahrain. She holds a PhD in pharmaceutical sciences from King's College London.



PROGRAM CO-CHAIR

Dr. Victor Tricot received his PhD in political science from the University of Salamanca, applying social movements theories to indigenous movements in Chile and Argentina. He also studies political participation, formation of party systems, civil society and political representation, and cultural identity and social justice. Victor has lectured in Spain, Chile, and the US, and participated in academic projects on indigenous movements and political participation. He was previously academic director of SIT's program on cultural identity, social justice, and community development in Chile.





CRITICAL GLOBAL ISSUES

Students may focus on any critical global issue, depending on their chosen curriculum.



DURATION

24 months



CREDITS

33 minimum



INSTRUCTIONAL SITES

Brattleboro, Vermont
Online



“

I have SIT and the ISLM program to thank for my current success. It has opened more doors than I could have ever imagined. I don't know anyone that wasn't deeply affected by their experience at SIT.

”

KELLY WISECARVER

*MA in Intercultural Service,
Leadership, and Management*

*Information Management and
Reports Manager, Federal Emergency
Management Agency (FEMA)*

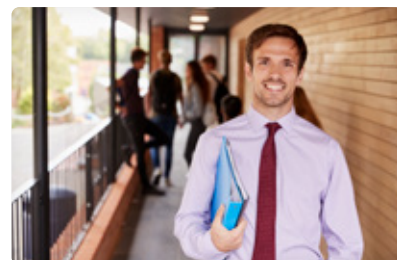
PART-TIME HYBRID MASTER'S INTERCULTURAL SERVICE, LEADERSHIP, AND MANAGEMENT

Whether you're changing careers or exploring new ones, SIT's Intercultural Service, Leadership, and Management degree allows you to design your own program of study, selecting courses that focus on your professional development interest. You will work closely with a faculty advisor to select courses and a reflective practice that gives you the theoretical understanding of multiple perspectives and processes that bring about social change and a more just world.

You will develop analytical skills that focus on the interpersonal, team, community, and global arenas. You may choose to focus on aspects of the International Education, Peace and Justice Leadership, Sustainable Development degree programs or a combination of these degrees including courses in TESOL.

You may specialize in program management, monitoring and evaluation, advocacy, or peacebuilding and mediation.

Because of the interdisciplinary and individual choice within this degree, the skills you develop are based on your learning plan.





EXAMPLE CAREER PATHS

Diversity, Equity, and Inclusion
Intercultural Training
International Education Development
Community Activism
Environmental Justice
Indigenous Rights



HALLMARK COURSES

Foundations in Intercultural Service,
Leadership, and Management
Leadership and Change
Practitioner Inquiry
Reflective Practice



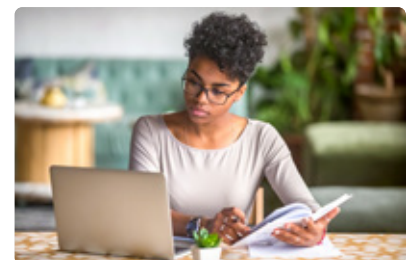
SAMPLE RESEARCH AREAS

Just Food Systems
Refugee Resilience Building
Accountability in White Anti-racism Organizing
Teaching Language in Post-conflict Societies
Music as a Cultural Gateway



PROGRAM CHAIR

Dr. Sora Friedman started working in international education in 1984, focusing on the preparation of new professionals, management training, exchange program management, public diplomacy, and international policy advocacy. She currently serves as a peer reviewer and consultant for journals and professional training programs. In 2019, she co-authored *Careers in International Education: A Guide for New Professionals*. Previously, she has chaired NAFSA's Teaching, Learning, and Scholarship Knowledge Community; served on NAFSA's New England regional chair-stream; been a member of CISabroad's Board of Advisors; and chaired NAFSA's Trainer Corps and Training Coordination Subcommittee. In 2015, she received the NAFSA Region XI James Leck Award for Distinguished Service. She received her PhD in cultural studies from George Mason University.





CRITICAL GLOBAL ISSUES

Education & Social Change



DURATION

24 months



CREDITS

36



INSTRUCTIONAL SITES

Brattleboro, VT
Online



“

[SIT] gave me the tools to enter a profession that, after my first week on the job, I realized is what I want to do for the rest of my life. SIT did an amazing job of preparing me to be successful at that.

”

DUBOIS JENNINGS

MA in International Education

*Northeast Field Director,
Institute for Study Abroad*

PART-TIME HYBRID MASTER'S INTERNATIONAL EDUCATION

Intercultural understanding and competency are more important than ever for today's educators, who work with increasingly diverse populations and serve as leaders in their institutions and communities. With SIT's cohort-based program, you will become a skilled educator and administrator through a carefully designed combination of instruction, practice, analysis, and experience. Our part-time, hybrid format allows you to complete most of your coursework online so you can stay in your job and community.

Customize your program to fit the unique demands of your career and long-term professional goals by choosing from a variety of electives focused on leadership, peacebuilding, language education, international development, and intercultural service. You may also conduct independent studies to advance your career objectives.

After getting to know your cohort during a foundational two-week residency in Vermont, you will develop new skills and knowledge through online studies for the remainder of the summer and into the spring. In your second year, you will reconvene with your cohort in Vermont for another brief summer residency. After studying online for the rest of summer and fall, you will complete your coursework that spring and present a capstone paper. Geared toward aspiring professionals in the field, a cornerstone of this program is reflective practice, which allows you to apply what you learn in your courses in the real world setting of your work.

By the end of the program, you will be prepared to meet the immense challenges of the international educator, positioning you for rapid advancement in the field.





EXAMPLE CAREER PATHS

Exchange Program Management
International Education Development
Community Education
Study Abroad Advising
Immigration Regulations



HALLMARK COURSES

International Education Theory,
Practice, and Policy
International Education Program
Planning and Design
Advanced Concepts in International Education
Reflective Practice/Capstone



SAMPLE RESEARCH AREAS

Effective Evaluation for Public
Diplomacy Programming
Refugee Perspectives on
Transitioning to US Higher Education
Elements of Successful Education
Abroad STEM Programs
Identifying Gaps in Resources for
Education in Emergencies
Incorporating Indigenous Ways of
Knowing in Online Pedagogy



PROGRAM CHAIR

Dr. Sora Friedman started working in international education in 1984, focusing on the preparation of new professionals, management training, exchange program management, public diplomacy, and international policy advocacy. She currently serves as a peer reviewer and consultant for journals and professional training programs. In 2019, she co-authored *Careers in International Education: A Guide for New Professionals*. Previously, she has chaired NAFSA's Teaching, Learning, and Scholarship Knowledge Community; served on NAFSA's New England regional chair-stream; been a member of CISabroad's Board of Advisors; and chaired NAFSA's Trainer Corps and Training Coordination Subcommittee. In 2015, she received the NAFSA Region XI James Leck Award for Distinguished Service. She received her PhD in cultural studies from George Mason University.





CRITICAL GLOBAL ISSUES

Peace & Justice



DURATION

24 months



CREDITS

34–35



INSTRUCTIONAL SITES

Brattleboro, Vermont

Johannesburg, Durban, and
Cape Town, South Africa

Online



“

If I had to use only one word to describe SIT, I'd say 'transformative.' Reflecting back, I see the journey of growth was three-dimensional—personal, academic, and professional.

”

TAMAM ABULTEAF

*MA in Peacebuilding and
Conflict Transformation*

PART-TIME HYBRID MASTER'S PEACE AND JUSTICE LEADERSHIP

Get the skills you need to design and lead interventions that address the causes and consequences of complex, multi-layered conflicts and help build sustained peace. Become an expert in core conflict transformation, mediation, dialogue, negotiation, civil resistance, and policy advocacy. Learn about post-conflict transition and the quest for justice through an on-the-ground seminar in South Africa, where you'll meet social change activists and leaders of racial equality efforts. Visit iconic NGOs and historic sites including the Nelson Mandela Foundation and Robben Island, a UNESCO World Heritage site. Meet and learn with global professionals who will challenge your views of the world, of others, and of yourself at the annual CONTACT Summer Peacebuilding Program, which typically draws peacebuilders from a dozen countries, including those currently confronting violence and civil war.

Become a leader in strategic peacebuilding and an expert in the design and management of justice promotion initiatives. Expand your professional network through an innovative partnership with leading peace and justice organizations in the United States. This program prepares you to address the root causes of conflict, including poverty, chronic intercommunal violence, non-representative political systems, gender inequality, and cultures of intolerance. The degree is part-time and blends two intense residencies with online courses, allowing you to stay in your job as you work toward your master's degree.





EXAMPLE CAREER PATHS

Community Mediation
Restorative Justice
Peace Education
Conflict-sensitive Development



PROGRAM CHAIR

Dr. Bruce W. Dayton has been active in conflict transformation, crisis management, and leadership training for more than 20 years as a practitioner, researcher, and educator. His research interests include peacebuilding, mediation, dialogue, crisis management, and leadership. In addition to three books, he has published numerous articles on conflict, crisis management, and leadership. He has provided training to leaders in more than a dozen countries and has designed and facilitated multi-stakeholder dialogues around energy and environmental conflicts. Bruce earned his PhD from Maxwell School of Citizenship and Public Affairs at Syracuse University, where he went on to serve as associate director of the Moynihan Institute of Global Affairs, research co-director of the Program for the Advancement of Research on Collaboration and Conflicts, and research professor. He chairs SIT's CONTACT Summer Peacebuilding Program.



HALLMARK COURSES

Theory and Practice of Peace and Justice Leadership
Negotiation, Mediation, and Dialogue
Leadership and Change
Strategic Peacebuilding



SAMPLE RESEARCH AREAS

Conflict Analysis and Transformation
Restorative Justice and Reconciliation
Change Leadership
Confronting Violent Extremism
Peacebuilding Design and Evaluation





CRITICAL GLOBAL ISSUES

Development & Inequality



DURATION

24 months



CREDITS

36



INSTRUCTIONAL SITES

Brattleboro, Vermont
Oaxaca, Mexico
Online



“

Sustainable development has to have many definitions...There are thousands of communities who have their own needs, their own goals, and their own ways of meeting those needs...We need to be open to different definitions so that development can occur according to people, according to places, and according to local interpretations.

”

DR. ALYSON DAGANG

Program Chair

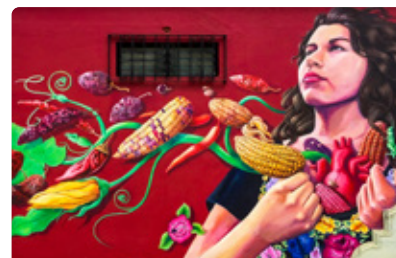
PART-TIME HYBRID MASTER'S SUSTAINABLE DEVELOPMENT

Current economic systems, policy, social practices, and destructive relationships with our environment have led to today's growing inequality, poverty, and unsustainable use of natural resources. In this part-time, hybrid MA program, you will explore innovative and regenerative solutions being developed all over the world and learn the skills to create real change that can help societies, communities, and ecologies thrive.

Regenerative sustainability is a problem-solving process using ecological and social design to create resilient and equitable systems that integrate the needs of society with the integrity of nature. You'll investigate the systems that have led to unsustainable ways of living and explore transformative thinking and practices across diverse sectors and regions.

With on-the-ground courses in Vermont and Oaxaca, Mexico, you'll learn from practitioners and innovators working at the cutting-edge of sustainable development. During the online portions of the program, you will apply your learning within your own job or community. Throughout the program, you will develop skills in participatory research, identifying problems and solutions, project design and implementation, project management, and evaluation. During the final semester, you will implement a research project in your own community, job, or another setting.

Both flexible and immersive, this MA is designed to advance your leadership capacity, practical skills, conceptual understanding, critical analysis, and systemic and design thinking to address urgent challenges.





EXAMPLE CAREER PATHS

Community Capacity Building
Food Security
Nonprofit and NGO Leadership and Management
Monitoring and Evaluation
Social Entrepreneurship
Environmental Outreach



HALLMARK COURSES

Theory and Practice of Social Change
Learning in Place: Land and Ecology
Advanced Leadership and Change
Food Sovereignty and Agroecology



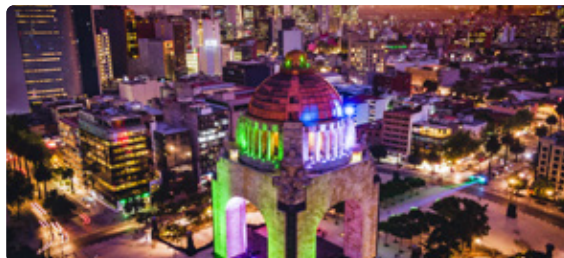
SAMPLE RESEARCH AREAS

Grassroots Advocacy
Local Food Security
Community Conservation
Sustainability Policy
Youth Sustainability Education



PROGRAM CHAIR

Dr. Alyson Dagang is a California native who earned a BA in international development with an emphasis in Latin American studies at American University in Washington, DC, and her PhD in Agroforestry and Forest Conservation at the University of Florida, Gainesville. Her research, carried out with local farmers, examined biophysical and socioeconomic aspects of wood and fruit tree repopulation of grazed pastures in central Panama. She has served as SIT Study Abroad associate academic dean for Latin America and previously directed SIT programs from 2002 to 2005 and 2007 to 2009. Alyson was a Peace Corps volunteer in the Panamanian province of Panama Oeste. She has worked on projects focused on gender, agroforestry, sustainable agriculture, community development, environmental education, forestry, and conservation.





CRITICAL GLOBAL ISSUES
Education & Social Change



DURATION
24 months



CREDITS
34



INSTRUCTIONAL SITES
Brattleboro, Vermont
Online



PART-TIME HYBRID MASTER'S TESOL

The world needs language teachers who serve learning and learners compassionately, understand the intercultural and identity dimensions of language, and model just and inclusive cultures in their classrooms. As English becomes a global language, teachers must be able to prepare their students to participate fully in a dynamic and changing world.

This program reflects the important recognition of multilingualism, linguistic and cultural diversity, and the use of plurilingual pedagogies to enhance learning. Backed by SIT's more than 50 years of expertise in this field and our broad network of talented alumni, the MA in TESOL program has been redesigned to address both the inner work of teaching in the classroom and the outer work of participation in communities of practice. You may choose to focus on one of four areas: teacher training, plurilingual pedagogy, teaching refugees and displaced persons, or teaching young learners.

This two-year, part-time program is designed for practicing teachers using their classrooms as laboratories for learning and reflection. It includes two three-week intensive summer sessions with your cohort on SIT's Vermont campus. The remainder of your coursework is online. A core program feature is the supervised practicum during which a faculty member visits your workplace for intensive mentorship and reflection.

“

SIT taught me about plurilingualism. Instead of pouring English into an empty mind, [SIT] advocates celebrating the diversity and values that each student brings to the classroom.

”

SHINICHIRO MATSUGUMA

MA in TESOL

PhD, Positive Psychology, Tokyo, Japan





EXAMPLE CAREER PATHS

Language Teaching
Teacher Training
Curriculum Design
Language School Development
and Management



PROGRAM CHAIR

Dr. Leslie Turpin began teaching with SIT's MA in Teaching programs in 1989 after teacher-training in refugee camps in Thailand. Her interests include refugee adjustment, cultural identity and memory, cultural and linguistic revitalization, reflective practice, classroom inquiry, literacy nonformal education, and teaching supervision. She received her PhD in integral studies at the California Institute for Integral Studies, where her research on intergenerational passing of cultural memory within a Laotian-American community led her to an exploration of the relationship between heritage culture/language vitality and the support of artists in a community. She has worked to support intercultural communication through the arts and is currently president of the board of the Vermont Folklife Center, a statewide organization committed to supporting Vermont's cultural diversity.



HALLMARK COURSES

Developing an Approach to Teaching Languages
Intercultural Communication and Ethnographic Inquiry for Language Educators
Curriculum Design and Assessment
Second Language Acquisition



EXAMPLE PRACTICUMS

Al Yamamah University in Saudi Arabia
Access International School in Brazil
EMBI Language School in Poland
Roger Williams University in the United States
World Education Thailand in Thailand





CRITICAL GLOBAL ISSUES

Education & Social Change



DURATION

36 months



CREDITS

60



INSTRUCTIONAL SITES

Brattleboro, Vermont
Online



“

I strongly believe every student should be able to pursue their own intellectual interests and research topics knowing they will receive the support of their doctoral colleagues and advisor.

”

DR. ALLA KORZH

Program Chair

PART-TIME HYBRID DOCTORATE (EdD) GLOBAL EDUCATION

Built on SIT's powerful experiential learning model, our intensive hybrid doctorate in global education (EdD) combines online coursework with short residencies in Vermont to fit the needs of professionals seeking to rapidly accelerate their career while tackling issues in global education, both locally and abroad.

Drawing from SIT's unique brand of in-depth, reflective practice and intensive research training, this doctorate gives you the tools you need to excel in an increasingly diverse, competitive, and interdisciplinary field. Courses take place in person and online, with an estimated 10 to 15 hours of studies a week.

Begin with a three-week summer residency in Vermont, which will ground and orient you to your studies, and allow you to bond with students and faculty. You will return for two weeks the following summer, but otherwise work completely remotely.

Courses are immersive, with engaging doctoral seminars; case studies; theory; data collection; research methods; and reflective practice. Transfer up to 12 graduate credits from a relevant master's program. You will receive one-on-one guidance from an SIT advisor who will work closely with you on research topics of your choice. Present your doctoral defense in person or remotely.

This program is recommended for students with a passion for international work and education at any level, in any subfield, at any location. As a graduate of this program, you will be fully supported by SIT's global professional and alumni networks to advance to the top of your field as an international educator.





EXAMPLE CAREER PATHS

University Professor
 Education Center Executive Director
 NGO or Nonprofit Director of Programs
 Education Administrator
 Senior or Leadership Role in Academic Affairs



PROGRAM CHAIR

Dr. Alla Korzh is an educator, researcher, and practitioner in the field of international education development with a regional focus on Eastern Europe. She holds an EdD in international educational development from Columbia University. Her research focuses on education (in)equity, social justice, social change, and educational transformations. She has researched socioeconomically disadvantaged communities including orphans in Ukraine and formerly incarcerated women in New York City. Her latest project examined transnational young adults' participation in social movements. She serves on the board of Sublimitas and the selection panel of the American Association of University Women and is a member of the Comparative and International Education Society. Her publications have appeared in journals and books, and she recently co-edited *Reimagining Utopias: Theory and Method for Educational Research in Post-socialist Contexts*.



HALLMARK COURSES

Theoretical Foundations
 Research Methods
 Reflective Practice Doctoral Seminar
 Data Collection
 Dissertation Writing



DISSERTATION

Throughout the program, you will receive individualized guidance and instruction from your SIT advisor and your doctoral colleagues to help you formulate, write, and defend your dissertation on a research topic of your choosing.





CRITICAL GLOBAL ISSUES

Education & Social Change



DURATION

12 months



CREDITS

19



INSTRUCTIONAL SITES

Brattleboro, VT
Online

GRADUATE CERTIFICATE INTERNATIONAL EDUCATION

This program is popular with international education professionals who hold a master's degree in another field and want to increase their understanding of international education as well as with professionals who are only able to commit to one year of study.

The 19-credit curriculum follows the same sequence as the first year of our MA in International Education. Students may choose to continue with our part-time hybrid master's program after completing the certificate program.



EXAMPLE CAREER PATHS

Exchange Program Management
International Education Development
Community Education
Study Abroad Advising



HALLMARK COURSES

Theory and Practice of International Education
International Education Program
Planning and Design



“

My experience at SIT has helped me a lot in my current role working on democracy and governance programs with an international think tank and development agency.

”

STEFFEN KRUEGER

Certificate in International Education

*Country Director,
Konrad Adenauer Foundation*





PROFESSIONAL CERTIFICATE CONFLICT TRANSFORMATION ACROSS CULTURES (CONTACT)

Learn the core ideas and practices of conflict transformation in this two-week professional and academic training program led by a diverse group of internationally recognized faculty with years of applied, classroom, and research experience.

With other peacebuilders, you'll explore conflict analysis, social identity and conflict, peacebuilding interventions, post-conflict reconciliation, intercultural communications, gender and peacebuilding, mediation, negotiation, dialogue, policy advocacy, the arts and peacebuilding, nonviolent social action, and monitoring and evaluation.



EXAMPLE CAREER PATHS

- Community Mediation
- Restorative Justice
- Peace Education
- Conflict-Sensitive Development



SKILLS

- Conflict Analysis and Transformation
- Mediation, Negotiation, and Dialogue
- Intercultural Communication
- Non-violent Social Action



CRITICAL GLOBAL ISSUES

- Peace & Justice
- Identity & Human Resilience



DURATION

<1 month



CREDITS

N/A



INSTRUCTIONAL SITES

Brattleboro, Vermont



“

The CONTACT program has enabled us to play an active and positive role in the conflict dynamics that abound in our daily lives, at the personal, social, and community level.

”

NUNGSHI AND TASHI MALIK

CONTACT Alumni



ADMISSIONS

Our admissions staff works one-on-one with every applicant. We are committed to assisting you throughout the process, from initial inquiry to program enrollment.

TO CONTACT ADMISSIONS:

Inside the US: 800 336-1616

Outside of the US: +1 802 258-3510

Email: admissions@sit.edu

We welcome you to get to know SIT Graduate Institute through events that we host on campus, online, and in cities near you. During summer residencies, you are welcome to visit campus, sit in on a class, and meet faculty and students.

SCHOLARSHIPS AND FINANCIAL AID

SIT Graduate Institute is dedicated to providing financial aid to as many students as possible and to ensuring that you have the information you need to successfully access funding for your graduate education. We offer grants and scholarships based on several criteria, including financial need and demonstrated commitment to SIT's mission.

For more information on SIT's financial aid programs, including scholarships, grants, and federal student loans, please visit: graduate.sit.edu/admissions-aid/financial-aid.

FINANCIAL AID OPTIONS FOR US STUDENTS AND PERMANENT RESIDENTS:

- SIT Scholarships and Grants
- Federal Direct Unsubsidized Student Loan
- Federal Direct Grad PLUS Loan

FINANCIAL AID OPTIONS FOR INTERNATIONAL STUDENTS:

- SIT Scholarships and Grants

WEBINAR CONFERENCES & EVENTS

SIT Graduate Institute regularly hosts virtual events and webinars. We also participate in virtual graduate school conferences throughout the year. We invite you to attend or stop by our booth so we can connect and help answer your questions about your graduate studies.

Please visit our website for more information:
graduate.sit.edu/admissions.

If you have questions about any event, please contact Meghan McMillan:
meghan.mcmillan@sit.edu.

Notice of Nondiscrimination: SIT does not discriminate on the basis of race, color, ethnic or national origin, sex, sexual orientation, gender identity, religion, age, ancestry, disability, military status, veteran status, or other non-merit reasons, in admissions, educational programs, or activities and employment, and complies with all applicable federal and state laws regarding nondiscrimination and affirmative action, including Title IX of the Education Amendments of 1972 and Section 504 of the Rehabilitation Act of 1973, and Title VII of the Civil Rights Act of 1964.

AFFILIATIONS

PARTNER SCHOLARSHIPS

SIT Graduate Institute has partnered with the following educational institutions and nonprofits to highlight the visions and shared values of both organizations. If you are an alum or a member of one of our affiliates, you may be eligible to receive a scholarship toward one of our master's degree programs. For more information, please visit graduate.sit.edu/academics/affiliations.



MEMBERSHIPS

SIT belongs to a network of membership organizations that share our social justice values, align with our mission, and help guide our decisions through continual communication and collaboration.





SIT SCHOOL FOR
INTERNATIONAL
TRAINING

GRADUATE INSTITUTE

TOLL-FREE WITHIN THE US
800 336-1616

OUTSIDE THE US
+1 802 258-3510

info@sit.edu

1 Kipling Road
Brattleboro, VT 05302-0676



World Learning Inc.

THE WORLD LEARNING INC. FAMILY

SIT GRADUATE INSTITUTE Offering global master's degrees and certificate programs focused on the world's most critical global issues. graduate.sit.edu | **SIT STUDY ABROAD** Providing more than 80 immersive summer and semester-long study abroad programs for undergraduates on seven continents. studyabroad.sit.edu | **WORLD LEARNING** Impacting people in more than 150 countries, World Learning is a global nonprofit working to create a more peaceful and just world through education, sustainable development, and exchange. worldlearning.org | **THE EXPERIMENT IN INTERNATIONAL LIVING** The nation's most experienced and respected provider of immersive study abroad for high school students. experiment.org



GRADUATE.SIT.EDU