



**SIT** SCHOOL FOR  
INTERNATIONAL  
TRAINING

GRADUATE INSTITUTE

# CHANGING THE WORLD BY DEGREES

Applications  
now open for

Doctorate in  
Global Education  
(EdD)

PAGE 36

FULL-TIME GLOBAL PROGRAMS | HYBRID DEGREE FORMATS | CERTIFICATES  
GROUNDED IN EXPERIENTIAL LEARNING SINCE 1932

**GRADUATE.SIT.EDU**

## LETTER FROM THE PRESIDENT



### DR. SOPHIA HOWLETT, PRESIDENT

I'm pleased to have this opportunity to introduce you to SIT Graduate Institute.

Since SIT was founded in 1964 as a training center for outbound Peace Corps volunteers, our institution has been grounded in social justice and guided by the belief that we learn best through experience and engagement followed by deep reflection. These values continue to be our compass as we navigate the profound challenges of our time with concentrations and program formats that meet the needs of our learners and the world.

“

The potential for change is all around you. This really is your moment. Don't stand back. Don't wait for others.

”

Experiential learning is at the heart of all of our program models, including our part-time hybrid format, in which you'll interact with your cohort throughout your program. We have also pioneered a full-time global master's degree format that gives you the opportunity to live with and learn from communities and experts on the frontlines of some of the world's most critical global issues. And, as a leader in international and global education, our EdD in Global Education is built upon in-depth, reflective practice and intensive research training.

Regardless of which program you choose, you will join a community that shares a common set of values that sustain and guide our lives. These values—community, intercultural understanding, sustainability, social inclusion, and justice—are the foundation upon which you become a changemaker.

A handwritten signature in black ink that reads "Dr. Sophia Howlett". The signature is written in a cursive, flowing style. Below the signature, there are two small dots, possibly indicating the end of the letter or a decorative flourish.



# TABLE OF CONTENTS

PROGRAM FRAMEWORKS . . . . .	2
FLEXIBLE DEGREE FORMATS . . . . .	3
THE SIT DIFFERENCE . . . . .	4
OUR COMMITMENT TO DIVERSITY, EQUITY, INCLUSION, AND ACCESS . . . . .	5
CAREER PATHWAYS . . . . .	6
STUDENT HEALTH, SAFETY & WELL-BEING . . . . .	6
CRITICAL GLOBAL ISSUES . . . . .	8
ALUMNI RELATIONS . . . . .	10
ALUMNI TESTIMONIALS . . . . .	11

## GLOBAL MASTER'S PROGRAMS

CLIMATE CHANGE & GLOBAL SUSTAINABILITY . . . . .	12
DIPLOMACY & INTERNATIONAL RELATIONS . . . . .	14
GLOBAL HEALTH . . . . .	16
HUMANITARIAN ASSISTANCE & CRISIS MANAGEMENT . . . . .	18
INTERNATIONAL EDUCATION . . . . .	20
SOCIAL JUSTICE & ADVOCACY* . . . . .	22
SUSTAINABLE DEVELOPMENT PRACTICE . . . . .	24

## PART-TIME HYBRID MASTER'S PROGRAMS

HUMANITARIAN ASSISTANCE & CRISIS MANAGEMENT . . . . .	26
INTERCULTURAL SERVICE, LEADERSHIP & MANAGEMENT . . . . .	28
INTERNATIONAL EDUCATION . . . . .	30
SUSTAINABLE DEVELOPMENT PRACTICE . . . . .	32
TESOL . . . . .	34

## PART-TIME HYBRID DOCTORAL PROGRAM

DOCTORATE (EdD) IN GLOBAL EDUCATION . . . . .	36
---	----

## GRADUATE CERTIFICATE PROGRAM

INTERNATIONAL EDUCATION . . . . .	38
-----------------------------------	----

## PROFESSIONAL CERTIFICATE PROGRAMS

CONFLICT TRANSFORMATION ACROSS CULTURES (CONTACT) . . . . .	39
EDUCATION ABROAD . . . . .	40
ADMISSIONS . . . . .	42
SCHOLARSHIP & FINANCIAL AID . . . . .	42
AFFILIATIONS . . . . .	43

*\*Accreditation pending*

***The programs listed from pp. 12–39 include Sample Career Paths, Sample Practicum Placements, and Sample Research Areas:***

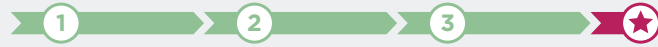
***For Returning Programs***—These are a selection of examples and possible options based on previous program alumni experiences.

***For New Programs***—These are a selection of examples and possible options SIT anticipates students on the program will be able to pursue.

# PROGRAM FRAMEWORKS

## FULL-TIME GLOBAL MASTER'S

1 YEAR



### SEMESTER 1

Fall | Abroad

Meet your cohort, participate in orientation, and witness firsthand the challenges, successes, and perspectives of communities on the frontlines of critical global issues.\*

### SEMESTER 2

Spring | Abroad

During your second semester, deepen your understanding while immersing yourself in vastly different geographic and cultural contexts.\*\*

### SEMESTER 3

Summer | Practicum

Further the skills and experience you've gained through your coursework by working directly with an organization responding to these challenges—in a location of your choosing.\*\*\*

### CAPSTONE PRESENTATION

Virtual or Vermont

Share your capstone, a final project where you will reassess your theoretical knowledge in light of your professional experience.

\* Some programs start with a two-week seminar in Washington, DC. See p. 14.

\*\*Some programs travel to multiple locations during the second semester.

\*\*\*The International Education MA includes a fourth semester. See p. 20.

## PART-TIME HYBRID MASTER'S

2 YEARS



### SUMMER RESIDENCY 1

2-3 Weeks  
Vermont

Build bonds with your cohort during a brief but important residency on SIT's breathtaking Vermont campus.\*

### REMAINDER OF YEAR 1

Summer, Fall &  
Spring Semesters  
Online

Begin deeply experiential studies with your cohort online, advancing your career and developing your knowledge without leaving your job or community.

### SUMMER RESIDENCY 2

2 Weeks  
Vermont or Abroad

Reconvene with your cohort to advance your learning goals.

### REMAINDER OF YEAR 2

End of Summer, Fall &  
Spring Semesters  
Online

Continue growing your expertise and skills through your coursework, while applying what you have learned in the real-world setting of your work.

### CAPSTONE PRESENTATION

Virtual or Vermont

Share your capstone, a final project where you will reassess your theoretical knowledge in light of your professional experience.

\* The Intercultural Service, Leadership & Management MA is a self-customized program that includes additional residency and research options, as well as a practicum. See p. 28.

## PART-TIME HYBRID EdD IN GLOBAL EDUCATION

3 YEARS

SIT Graduate Institute offers an intensive, **part-time hybrid EdD in Global Education**, a three-year program with short-term summer residencies in Brattleboro, Vermont; blended and online coursework; and dissertation preparation and defense. [View p. 36 to learn more.](#)



Whether you're a full-time student just entering the field or a working professional, you'll find a program suited to your values and career goals.

## FLEXIBLE DEGREE FORMATS

### GRADUATE DEGREES WITH A GLOBAL EDGE

SIT degrees are designed for a wide range of students who have one goal in common: to become changemakers with the skills to listen and learn across communities and cultures.

SIT's degree formats are suitable for recent college graduates, mid-career professionals seeking to change tracks, and experienced professionals who want to sharpen their skills.

**SIT'S GLOBAL MASTER'S PROGRAMS** provide a comparative and experiential framework in which you will assess the challenges, successes, and vastly different perspectives of communities on the front lines of the world's most critical global issues. During your final practicum semester, you will work directly with an organization responding to a specific challenge.

**SIT'S PART-TIME HYBRID PROGRAMS** are designed for working professionals who want to advance their careers while staying in their jobs and communities. Many programs include brief but formative residencies on SIT's beautiful Vermont campus, where you'll build important bonds with your cohort and your professors. Some programs also include residencies abroad during the second year to gain a more global experience.

With all SIT Graduate Institute programs, you'll develop theoretical knowledge, intercultural communication skills, and professional experience.

SIT is accredited by the New England Commission of Higher Education (NECHE) through its Commission on Institutions of Higher Education. Inquiries regarding the accreditation status should be directed to the administrative staff of the institution. Individuals may also contact:

**Commission on Institutions of Higher Education**

New England Commission of Higher Education  
209 Burlington Road | Bedford, MA 01730-1433 | 781 271-0022 | [info@neche.org](mailto:info@neche.org)

*SIT has been approved to participate in the National Council for State Authorization Reciprocity Agreements.*



*Please note that SIT will make every effort to maintain its programs as described. To respond to emergent situations such as COVID-19, however, SIT may have to change or cancel programs. Please see the SIT Graduate Institute website for the most up-to-date information. [graduate.sit.edu](https://graduate.sit.edu)*

# THE SIT DIFFERENCE

## GROUNDING IN 90 YEARS OF INTERCULTURAL EDUCATION

School for International Training is rooted in 90 years of experiential learning and cross-cultural understanding. Our history dates back to 1932, when Dr. Donald Watt founded The Experiment in International Living, an immersive summer program that sends U.S. students abroad to live and learn with local host families.

In the early 1960s, when President John F. Kennedy named Experiment alum Sargent Shriver as founding director of the Peace Corps, Shriver turned to The Experiment to help train the earliest Peace Corps volunteers. This led to the establishment of School for International Training, an accredited higher education institution with undergraduate study abroad programs and a global graduate institute.

In the 1970s we expanded again, as World Learning, an NGO that today works in more than 150 countries to create a more sustainable, peaceful, and just world through education, development, and exchange.

## TODAY'S CHALLENGES DEMAND A GLOBAL PERSPECTIVE

Whether you plan to work abroad or within your local community, today's successful career demands a global perspective.

SIT Graduate Institute is uniquely positioned to offer globally focused master's and doctoral programs and certificates that shape the next generation of changemakers.

## BE PART OF AN INTERNATIONAL COMMUNITY

At SIT, you will become part of a worldwide network of alumni and organizations committed to responsible global citizenship.

SIT alumni are leading governmental departments and non-governmental organizations. Hundreds of International Education alumni are working in college and university study abroad offices throughout the country. Dozens of MA in TESOL alumni have won prestigious U.S. State Department English Language Teaching Fellowships. And, graduates of our newest Climate Change, Sustainability, Humanitarian Assistance, Diplomacy, and Global Health MA programs are already making changes in their communities and in the world.

Grounded in a shared set of values, SIT-Peace Corps ties remain strong, with many Returned Peace Corps Volunteers choosing to advance their education at SIT. The Peace Corps is one of dozens of partner organizations whose participants have access to special SIT scholarships. Please see page 43.

**Featuring small, personalized student cohorts, faculty with deep ties to the communities and countries where they teach, innovative degree formats, and global practicum opportunities, SIT offers an unrivaled global educational experience.**



**Today's world is in  
desperate need of  
visionaries who can actively  
listen, empathically learn,  
and compassionately bridge  
the chasms that divide us.**

**If you aspire to be an agent  
of change within your  
community, your country,  
or your planet, join SIT in  
creating a more sustainable,  
peaceful, and just world.**

## **OUR EXPERIENTIAL APPROACH TO LEARNING**

SIT programs are grounded in the experiential education model, where learning occurs at the nexus of theory and practice.

By challenging old paradigms, assumptions, and beliefs, experiential learning often leads to significant transformation as students develop critical awareness and reflection through a wide range of cross-cultural perspectives. At SIT, you will benefit from the expertise, mentorship, networks, and support of faculty and staff who live and work around the world, including many who were born, raised, or educated in the country where they practice.

As an SIT student, you will prepare to become a highly skilled practitioner with a commanding knowledge of the theoretical basis of your profession; experience in the field; and a deep awareness of your own capabilities, values, and ethics.

## **OUR COMMITMENT TO DIVERSITY, EQUITY, INCLUSION, AND ACCESS**

School for International Training promotes a learning environment where diversity is a source of strength and where every individual is valued as an important contributor toward the accomplishment of its mission. In accordance with this mandate, and as a reflection of World Learning's commitment to promoting intercultural understanding, social justice, and world peace, SIT, as World Learning's institution of higher education, strives to create a learning and teaching environment that is composed of people from different backgrounds and that maximizes the potential of each person.



## CAREER PATHWAYS

We support graduate students and alumni in achieving their professional goals through a combination of independent and interactive services, including Career Exploration and Planning and Career Coaching. We also provide original and curated resources for jobseekers on our website, including job boards, podcasts, e-books, blogs, and more.

### CAREER EXPLORATION AND PLANNING

This is a recursive process that involves:

- Engaging in self-assessment and reflection
- Exploring career paths
- Developing an action plan
- Honing job-seeking skills

To guide students in this process, we endorse ImaginePhD, a robust platform powered by the Graduate Career Consortium. This free and confidential career exploration and planning tool:

- Assesses career-related skills, interests, and values
- Explores career paths appropriate to your discipline
- Creates self-defined goals
- Maps out next steps for career and professional development success

### CAREER COACHING

To supplement the Career Exploration and Planning process, we offer individual career coaching in job search strategies and skills.

Our Career Coach assists with:

- Resume, cover letter, and LinkedIn profile review
- Interview practice
- Networking
- Salary negotiations

Sessions last 50 minutes and can be conducted synchronously (WebEx video call) or asynchronously (feedback via email).

## STUDENT HEALTH, SAFETY & WELL-BEING

SIT Graduate Institute places the highest priority on student safety and well-being. SIT's Office of Student Health, Safety & Well-being (SHSW) is a team of student affairs professionals fully dedicated to supporting students across a wide range of safety and well-being issues.

This team works in partnership with program staff onsite, as well as with students, to provide safety and security guidance, emergency response, and crisis management. They also work directly with graduate students on various aspects of their SIT experience, such as counseling and mental health support, cultural adjustment, diversity and inclusion, disability support, academic accommodations, international insurance, and more.

SIT is committed to fostering a climate across all programs that is free from sexual- and gender-based discrimination, harassment, and violence. We maintain Sexual Harassment and Misconduct policies to protect and support students. We also provide relevant training and material to in-country staff and have a dedicated Title IX Coordinator. More information is available at: [graduate.sit.edu/student-services/sexual-safety-title-ix](https://graduate.sit.edu/student-services/sexual-safety-title-ix).

Learn more at: [graduate.sit.edu/student-services](https://graduate.sit.edu/student-services).



“

There are many excellent programs that will teach you skills, but few that will hone your heart and ground you while doing so, and yet these are the skills that mean the difference between success and failure in the fields that we have chosen.

”

**MEGHAN AUDETTE**

*MA in Sustainable Development*

*Former Deputy Director,  
United Nations Relief and Works  
Agency for Palestine Refugees*



# A FRAMEWORK OF CRITICAL GLOBAL ISSUES

SIT develops programs within a framework of the most critical global issues of the day so that the next generation has the expertise and intercultural understanding to engage all identities, perspectives, and cultures in respectful, enduring, and meaningful responses.



## CLIMATE AND ENVIRONMENT

Few contemporary challenges are as urgent or contested as climate change and its impact on our environment. The collective efforts of scientists, scholars, politicians, activists, indigenous communities, and concerned citizens are needed to gauge and mitigate environmental and social impacts. Our programs reflect this diversity of perspectives. Natural science-based programs explore global hotspots, with a focus on ecology, biodiversity, and conservation. Social science-based programs emphasize environmental justice. Students in all programs develop the knowledge and skills to become leaders in shaping environmental policies and balancing ecological outcomes for an uncertain future.



## DEVELOPMENT AND INEQUALITY

Pervasive inequality impacts individuals and communities worldwide. Where historic development practices have fallen short of lasting change, local responses offer innovative solutions to build more sustainable futures. Our programs explore these efforts to balance ecological sustainability, economic opportunity, and gender equity alongside the complexities of growth-centric development. Students become deeply aware of what it means to confront inequality as they witness firsthand the work of people engaged in creating more just and fair societies.



## EDUCATION AND SOCIAL CHANGE

Unequal access to quality education inhibits the potential of millions of girls and women, indigenous populations, people with disabilities, displaced persons and refugees, and communities living in conflict areas. Intercultural, international-based education connects and engages communities as it values differences, confronts inequality, and recognizes common struggles. Our programs develop reflective educational leaders who can open up the world to new generations, advocate for local agency and intercultural communication, and support transformative settings where self-empowerment and human potential can flourish.



## IDENTITY AND HUMAN RESILIENCE

The human condition is in change. Human rights and identity. War. Climate change. Economic disparities. Discrimination. Indigenous and marginalized individuals are exploring what it means to be different and equal in a complicated world, and those under pressure from their environment are on the move with mixed migration challenging national, communal, and personal identities. Our programs explore the human condition and the crisis of belonging in an increasingly complex and mobile world. Students gain critical insight on the phenomena of resilience and resistance through listening to the voices of indigenous people and marginalized groups.





### **GEOPOLITICS AND POWER**

Power shifts and power plays challenge outmoded geopolitical models that are failing to ensure global security and stability. Disruptions, though tumultuous, create spaces to interrogate the politics of the past and construct alternative systems of power. Our programs explore the many shocks to the system that give rise to regional independence movements, new forms of populism rife with old nationalisms, and illiberal democracies, and ask, “What next?” Students gain nuanced perspectives from leading political scientists, diplomats, policymakers, and civic activists who are engaged in reimagining our political future.



### **GLOBAL HEALTH AND WELL-BEING**

Healthcare science and health systems worldwide are adapting, expanding, or straining to address the complex and varying needs of vulnerable and underserved populations: children, women, gender minorities, refugees and displaced persons, the elderly, the mentally ill, and the economically disadvantaged. Our programs explore the potential of using both indigenous and new science and technology to support vulnerable populations as well as the limitations and possibilities of contrasting health policy initiatives at the intersections of regional and local governments, global and community organizations, and traditional and indigenous approaches. Students examine the medical and social determinants of health and well-being in urban and rural settings to understand how health carers, policies, and programs can best support those in dire need.



### **PEACE AND JUSTICE**

Conflict—incited by structural inequality, migration, identity and exclusion, resource scarcity, and historical trauma—manifests through war, revolution, and other forms of violent and coercive mobilization. In the face of this reality, the prospect of long-term peace often seems unattainable. Our programs explore how changemakers manage conflict constructively, balance reconciliation and justice, and support post-conflict remembrance and healing. Students evaluate the root causes of conflict to develop evidence-based strategies designed to transform our world into one that is more peaceful and just.

## ALUMNI RELATIONS

With a 90-year history of global education and exchange, the World Learning family comprises program alumni worldwide, with more than 70,000 alumni from SIT alone.

Our Alumni Relations team creates opportunities for alumni to engage with the institution and each other through special events throughout the year. We support alumni in achieving their goals and celebrating their successes by sharing resources, news, and opportunities, building connections, and fostering a community linked by our shared identity. In doing so, we seek to nurture our commitment to responsible global citizenship.

We encourage you to keep your contact information with us current so that we can inform you of upcoming events and other opportunities. To update your contact information, search for fellow alumni, or to be added to our alumni communications, please contact [alumni@sit.edu](mailto:alumni@sit.edu). To get involved with SIT, connect with alumni events, or volunteer for alumni outreach opportunities, please contact [alumni@sit.edu](mailto:alumni@sit.edu).



“

I feel like each of us is leaving with an incredible education. ... Everyone is ending up with traits that are going to be extremely desirable for employers. And the SIT network [of alumni and faculty] is incredible.

”

### MICALEA LEASKA

*MA in Climate Change*

*Program Associate, Metrics and Evaluation,  
Seeding Labs*



“

SIT's experiential philosophy directly influenced my view of teaching and learning. I firmly believe that students learn best by doing, that qualitative research is important, and that the relationships formed between students and the speakers of a language/culture are vital to the process.

”

### LINDA SUKARAT

*MA in TESOL*

*New York College ESL Instructor  
of the Year 2021*



“

I use everything from program design to intercultural communications with Amandla. But beyond that, I'm in close contact with my SIT cohort. ... I feel like I gained a whole network of advisors.

”

### ALEXANDER STONE

*MA in International Education*

*Executive Director, The Amandla Project to  
increase study abroad participation among  
students with disabilities*



## ALUMNI TESTIMONIALS



“

For me, SIT was the window into the future; the path I needed to realize my life's aspiration to work as a development practitioner for the world's leading international finance institution. My aspiration may be different than yours, but we share a common goal of working to make the world a better place.

”

### AICHA NAOMI COOPER

*MA in Sustainable Development*

*World Learning Trustee;  
Human Resources, The World Bank*



“

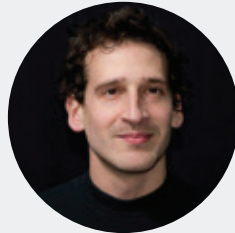
... I can use these skills for negotiation and reconciliation between Bangladesh and Myanmar so that the Rohingya community can be peacefully repatriated to their motherland.

”

### DR. ABUL KASHEM MOHAMMAD JAMAL UDDIN

*Conflict Transformation Across  
Cultures (CONTACT)*

*Professor of Sociology, Bangladesh*



“

We cultivated plants, but also the community's relationship with those plants. We created an environmental learning space, but also reflected on how the space changed us as educators. We crafted curriculum and program designs for garden activities. We researched thoroughly the techniques and challenges of sustainable agriculture. We made literal bucketloads of tomatillos, but mainly: we brought hundreds of stakeholders together in a shared space that represents a shared vision for the future.

”

### TALIESIN REID HAUGH

*MA in Sustainable Development*

*Former Project Manager,  
World Learning/SIT*

SIT expanded my understanding of the world and provided a level of international solidarity that helped me think about the parallels between what was happening in the world and here at home.

”

### JOSÉ ALFARO

*MA in Intercultural Service,  
Leadership, and Management*

*Founding Director of Latinx Leadership  
and Community Engagement,  
Everytown for Gun Safety*



“

It was a profound and intensive intellectual encounter that seemed strange to me because it countered everything I was used to seeing, knowing, and doing in my former academic experiences.

”

### CHARLES MCKINNEY

*MA in TESOL*

*English Teacher,  
American University of Iraq*



## CRITICAL GLOBAL ISSUES

Climate & Environment



## DURATION

12 months



## CREDITS

36



## INSTRUCTIONAL SITES

Ísafjörður, Iceland  
Zanzibar, Tanzania  
Practicum



# GLOBAL MASTER'S CLIMATE CHANGE AND GLOBAL SUSTAINABILITY

Climate change is advancing at rates even faster than anticipated, and the need for creative, courageous advocates and policymakers is growing with it. On this program you will examine the policies and innovative responses that frontline communities, NGOs, and governments are developing to combat climate change.

In Iceland, you'll be introduced to climate science, assessment, and policy. You'll learn about environmental governance and witness Iceland's changing geopolitical role as a leader in energy innovation.

In Zanzibar, you'll explore agriculture and aquaculture, food chains and markets, water and food security, and government policies on coastal urban planning. You'll also examine the challenges of balancing natural resource management with the need to promote sustainable livelihoods.

Round out your program with a semester-long practicum at an organization anywhere in the world to practice what you've learned in a professional setting while adding real-world experience to your résumé.

This program is designed for those who want to make a difference in sustainability, ecological conservation, and community livelihoods. An advanced knowledge of science is not required; you will learn the key concepts of climate science on the program.

“

It is an immense privilege to draw from so many diverse perspectives and approaches and bridge these to localities close to home.

”

## EMMA VOS

*MA in Climate Change and  
Global Sustainability*







### SAMPLE CAREER PATHS

Climate and Environmental Science  
 Environmental Monitoring and Climate Change Mitigation  
 Community Development and Resilience  
 Climate and Environmental Policy and Advocacy  
 Sustainability Consultancy



### PROGRAM CHAIR

**Dr. Richard Walz's** research and publications emphasize contemporary and historical topics at the human-environment interface. His teaching and publications incorporate community-based research and promote independent student field studies on climate, resources, and society. His expertise concerns the anthropology and historical ecology of eastern Africa and the western Indian Ocean.

Dr. Walz completed his PhD at the University of Florida. His doctoral research produced a history of human settlement and environmental change for the region between the Swahili Coast and the Eastern Arc Mountains. His ongoing and published research addresses long-term social and environmental change, the application of climate proxies, and the effects of contemporary climate change on communities and ecosystems in East Africa and the western Indian Ocean.



### HALLMARK COURSES

Science of Global Climate Change  
 Climate Change in the Arctic: Methods and Impact Assessment  
 Human-Climate Interface II: Water, Food, and Climate Economics in Zanzibar  
 Climate Change and Sustainable Livelihoods in the Indian Ocean Region  
 International Environmental Policy and the Challenge of Climate Diplomacy



### SAMPLE PRACTICUMS

Climate Change and Indigenous Rights, Oxfam America, Washington, DC  
 Forest Incomes for Environmental Sustainability, Monrovia, Liberia  
 International Arctic Research Center, University of Alaska, Fairbanks, Alaska  
 EcoConsult / Hydroponic Agriculture Development Project, Amman, Jordan  
 Office of Climate Change, Sustainability, and Resiliency, City and County of Honolulu, Hawai'i





## CRITICAL GLOBAL ISSUES

Geopolitics & Power



## DURATION

12 months



## CREDITS

34



## INSTRUCTIONAL SITES

Washington, DC

Geneva, Switzerland

Durban and Johannesburg,  
South Africa

Practicum

# GLOBAL MASTER'S DIPLOMACY AND INTERNATIONAL RELATIONS

Prepare for a career in international, regional, and global affairs; diplomacy; or the Foreign Service. Learn about the structure of the global political system and the possibility and limits of multilateral diplomacy to address the most critical global issues facing the planet.

Courses in the United States, Europe, and South Africa will provide you with both western and non-western perspectives on international relations and an appreciation of the complexities of negotiating across cultural, socio-economic, and political differences.

A special feature of the degree is the Traveling Seminar in which you learn directly from senior leaders in government, NGOs, and intergovernmental organizations in each region.

Gain skills in negotiation, diplomatic leadership, crisis management, strategic decision making, collaborative problem solving, and applied research. Graduates will be positioned to work with government agencies, NGOs, and intergovernmental organizations, particularly in situations of conflict, crises, and rapid change.

Through our broad global network, SIT will work with you to find meaningful practicum positions with NGOs, intergovernmental organizations, and other entities. You may also work with your advisor to develop your own practicum.



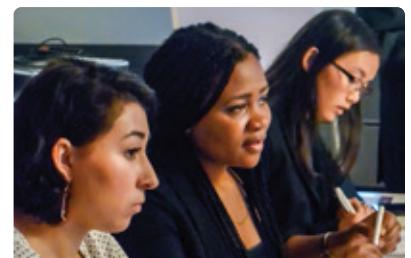
“

A special feature of the degree is the traveling seminar, in which students will learn directly from senior foreign affairs leaders working in government, NGOs, and intergovernmental organizations in each of the three regions.

”

**DR. BRUCE W. DAYTON**

*Program Chair*







### SAMPLE CAREER PATHS

Foreign Service  
Public Diplomacy  
Conflict and Crisis Management  
Nongovernmental and  
International Organizations



### HALLMARK COURSES

Foundations in Diplomacy and  
International Relations  
Strategic Foresight and Scenario-Building  
The Future of Europe  
Continental Solidarity and the African Union



### SAMPLE PRACTICUMS

United Nations Foundation  
African Centre for the Constructive  
Resolution of Disputes  
Center for Strategic and International Studies  
US Agency for International Development



### PROGRAM CO-CHAIR

**Dr. Bruce W. Dayton** has been active in conflict transformation, crisis management, and leadership training for more than 20 years. His research interests include peacebuilding, mediation, dialogue, crisis management, and leadership. He has published numerous books and articles; has provided training to leaders in more than a dozen countries; and has designed and facilitated multi-stakeholder dialogues. Dr. Dayton earned his PhD from Maxwell School of Citizenship and Public Affairs at Syracuse University, where he served as research co-director of the Program for the Advancement of Research on Collaboration and Conflicts.



### PROGRAM CO-CHAIR

**Dr. Goran Jovanovic** focuses on globalization and global governance, foreign policy and diplomacy, international organizations, political communication, international relations theories, and strategic foresight. He has published widely and produced many educational films and documentaries. He holds a doctorate and master's degree in international relations from the University of Geneva. He was international relations department head at the International University in Geneva and scientific director at the Research Center on Audiovisual Sources of Contemporary History at the Graduate Institute of International Studies in Geneva.







## CRITICAL GLOBAL ISSUES

Global Health



## DURATION

12 months



## CREDITS

36



## INSTRUCTIONAL SITES

Geneva, Switzerland  
Milimani and Kisumu, Kenya  
New Delhi, India  
Practicum



“

Global health and provision of healthcare systems—which encompass institutions, organizations, and resources—have become a serious and urgent priority, especially due to migration, natural disasters, and failing governance structures.

”

**DR. AZIM KHAN** *and*  
**DR. STEVE WANDIGA**

*Program Co-Chairs*

# GLOBAL MASTER'S GLOBAL HEALTH

Global public health issues pose major challenges to governments and health services providers. Mass migration, natural disasters, and failing governance structures have heightened the need for professionals able to enhance healthcare access; manage the delivery of robust disease-specific programs, drugs, and medical supplies; and develop functioning healthcare systems.

Gain comparative perspectives and professional skills in health policy, design, administration, and management in countries with serious health challenges and diverse delivery models. Begin with an orientation in Geneva, exploring the role humanitarian organizations play in shaping international policy and delivering healthcare in crisis situations.

Kenya has a high burden of tuberculosis and TB/HIV coinfection and infectious and non-communicable diseases. SIT Kenya in Kisumu has a strong collaboration with Kenya Medical Research Institute at the Centre for Global Health Research, which also hosts the US Centers for Disease Control and Prevention (CDC). In New Delhi, a city with a burgeoning population and diverse health systems, SIT India has an excellent pool of resources, organizations, and experts including the South East Asia Regional Office of the World Health Organization. Visit healthcare delivery institutions in rural and urban India and hear from health workers and community leaders about healthcare delivery, policy, design, administration, and management. In your final semester, self-design a practicum in a location of your choosing based on your academic and professional goals.





### SAMPLE CAREER PATHS

Global Health Consultant  
Hospital Manager  
Epidemiologist  
Health Policy Analyst



### HALLMARK COURSES

Fundamentals in Global Health  
Epidemiology of Communicable and Non-communicable Diseases  
Indian Health Policy, Design, Systems, and Management  
Social Determinants, Equity, Reproductive and Child Health



### SAMPLE PRACTICUMS

Kenya Medical Research Institute (KEMRI)—  
Centre for Global Health Research (CGHR)  
Kenya Ministry of Health or County  
Department of Health  
South East Asia Regional Office of the World  
Health Organization (WHO) in India  
Médecins Sans Frontières (MSF) in India



### PROGRAM CO-CHAIR

**Dr. Azim Khan** earned a PhD in health, gender, and human rights from Aligarh Muslim University, where his thesis focused on sex-selective abortions and prenatal diagnostic techniques. He was a recipient of the Ford Foundation International Fellowship; and a Fellow of the Royal Society for Public Health, UK, and is a life member of the Indian Public Health Association. In 2007, he was named a Scholar of Peace Fellow by the Foundation for Universal Responsibility of the Dalai Lama. He has been an academic director for SIT since 2008.



### PROGRAM CO-CHAIR

**Dr. Steve Wandiga** is a senior research officer at Kenya Medical Research Center in Kisumu. He serves on the steering committee of the East African Consortium for Clinical Research, co-chairs the TB Stakeholder Community Engagement Working Group, and is a member of the TB Clinical Trials Infrastructure Working Group. He has also coordinated the East Africa Healthy Pregnancy, Birth, Growth, and Development Knowledge Initiative. He is managing editor of East African Science Journal within the East African Health Research Commission. Dr. Wandiga holds a PhD in medical research from Ludwig Maximilian University, Munich, Germany.







#### CRITICAL GLOBAL ISSUES

Identity & Human Resilience



#### DURATION

12 months



#### CREDITS

36



#### INSTRUCTIONAL SITES

Amman, Jordan  
Istanbul, Turkey  
Kampala, Uganda  
Practicum



“

This MA program equips aspiring humanitarian and emergency professionals with the skills to lead effective, innovative humanitarian interventions. Students will gain a global perspective on humanitarian response and crisis management through field-based learning in Jordan, Uganda, and Switzerland.

”

**DR. BAYAN ABDULHAQ**

*Program Chair*

## GLOBAL MASTER'S HUMANITARIAN ASSISTANCE AND CRISIS MANAGEMENT

Unprecedented levels of conflicts and climate change have displaced more than 68 million people worldwide and created a high demand for professional aid workers trained to deliver humanitarian responses in line with legal, ethical, and professional guidelines.

On this groundbreaking program, you will spend one semester in Jordan and the second in Uganda—countries that together host nearly three million refugees but take starkly different approaches to their care. You will come face to face with real-world challenges and people and organizations on the ground including the United Nations High Commission for Refugees, the United Nations Relief and Works Agency, the World Health Organization, and the United Nations International Children's Emergency Fund. During a 10-day field visit to Istanbul, Turkey, a country that hosts the largest number of refugees in the world, you will focus on the humanitarian policies that shape Turkey's approach to the refugee question and its relationship with the European Union.

Throughout this program, you will grapple with the major critiques of humanitarian action, learn ethically sound research methods, identify needs and gaps in delivery systems, and provide evidence-based recommendations for interventions and responses in a range of humanitarian sectors.

During your final semester, you will conduct a practicum with a UN agency, intergovernmental organization, international development agency, or NGO to gain valuable experience and enhance your skills in an international environment.





### SAMPLE CAREER PATHS

Crisis and Emergency Management  
Nonprofit and NGO Management  
Humanitarian Diplomacy and Advocacy  
Relief Work  
International Development



### HALLMARK COURSES

Issues in Humanitarian and Refugee Studies  
Humanitarian Policy, Diplomacy, and Advocacy  
Crisis Management and Leadership in Humanitarian Response  
International Humanitarian and Refugee Law, Standards, and Principles



### SAMPLE PRACTICUMS

Save the Children  
Higher Population Council  
Jordan Hashemite Fund for Human Development



### PROGRAM CHAIR

**Dr. Bayan Abdulhaq** leads SIT's undergraduate programs in refugee health and humanitarian action in Jordan, where she works with a large network of NGOs including Jordan River Foundation, Jordan Health Aid Society, and JOHUD to design learning opportunities and reciprocity projects. Dr. Abdulhaq has taught at the University of Jordan and the University of Petra and has extensive experience in educational quality assurance. She served as board member and executive director of AROQA and as a higher education consultant in Bahrain. She holds a PhD in pharmaceutical sciences from King's College London.



### ASSOCIATE CHAIR

**Dr. Charlotte Karungi Mafumbo** earned a PhD from the University of Cape Town. She also holds an MA in international studies from the University of Sydney, a certificate in gender and conflict studies from Hannover University, a diploma in social conditions and policies from the University of Copenhagen, and a BA in history and international organization from Makerere University. She was a 2012 Global South Scholar at the Graduate Institute of International and Development Studies in Geneva and has worked as a lecturer at Makerere University.







**CRITICAL GLOBAL ISSUES**  
Education & Social Change



**DURATION**  
16 months



**CREDITS**  
38



**INSTRUCTIONAL SITES**  
Washington, DC  
Ho Chi Minh City, Vietnam  
Bilbao, Spain  
Practicum



“

I like that this is something that is feasible for working people, professionals, parents. ... I'm not looking for a change in career, although I think this really enhances the work that I'm doing.

”

### CASEY ALDRICH

*MA in International Education*  
*Current student, EdD in Global Education*  
*Associate Director of Global Studies,*  
*John Sloan Dickey Center for Intercultural Understanding, Dartmouth College*

## GLOBAL MASTER'S INTERNATIONAL EDUCATION

Today's world is faced with a wide range of challenges that have one commonality: the need for problem-solvers able to function across difference. International educators work in formal and nonformal systems helping all age groups learn to work interculturally.

In Washington, D.C., you will be introduced to international education organizations and professionals. The program then brings you to two education hubs, Bilbao, Spain, and Ho Chi Minh City, Vietnam—each with unique and diverse histories, cultures, and educational systems—for one semester each.

Learn intercultural communication, program management, and how education contributes to post-conflict development. Visit nonprofit organizations, unions, youth exchange programs, ministries, and program providers. On excursions, you will learn about study abroad education in a European context and the underpinnings of national education policy in an Asian social and political organization.

You will then spend two semesters completing a practicum and conducting independent research. By the completion of this program, you will be familiar with educational policies and practices in three to four countries (depending on the site of your practicum), including the United States, and you will have the skills and understanding needed to build a successful career as a socially minded international educator. This program is targeted toward aspiring and new professionals with up to five years of related experience.





### SAMPLE CAREER PATHS

Exchange Program Management  
Advising  
Program Design  
International Education Development



### HALLMARK COURSES

Educational Practice and Policy in  
Vietnam/Spain  
International Education Design,  
Delivery, and Evaluation  
Practitioner Inquiry  
Reflective Practice



### SAMPLE PRACTICUMS

Youth Exchange Program Associate  
Study Abroad Counselor  
International Student Adviser  
Refugee Programs Support Staff  
Community Education Trainer



### PROGRAM CHAIR

**Dr. Sora Friedman** started working in international education in 1984, focusing on the preparation of new professionals, management training, exchange program management, public diplomacy, and international policy advocacy. She serves as a peer reviewer and consultant for journals and professional training programs. She is co-author of *Careers in International Education: A Guide for New Professionals*. She has chaired NAFSA's Teaching, Learning, and Scholarship Knowledge Community; served on NAFSA's New England regional chairstream; been a member of CISabroad's board of advisors; and chaired NAFSA's Trainer Corps and Training Coordination Subcommittee. In 2015, she received the NAFSA Region XI James Leck Award for Distinguished Service. She received her PhD in cultural studies from George Mason University.







#### CRITICAL GLOBAL ISSUES

Peace & Justice



#### DURATION

12 months



#### CREDITS

34



#### INSTRUCTIONAL SITES

Belgrade, Serbia

Buenos Aires, Argentina

Budapest, Hungary

Practicum



## GLOBAL MASTER'S SOCIAL JUSTICE AND ADVOCACY\*

LAUNCHING IN FALL 2023

Today's movements are confronting racism, oppression, and growing inequality. Graduates of this program will have a broad, cross-cultural understanding of social justice, a type of knowledge and sensitivity that today's world requires.

Learn from advocates for the rights of LGBTQIA+, refugee, migrant, and Indigenous communities and movements for justice after conflict, right to the city, and climate justice. Then, design an advocacy program in support of the social justice issue of your choice.

Belgrade, Serbia, is home to dynamic, new social movements and activist groups demanding social change. In Buenos Aires, Argentina, movements have sparked a "human rights cascade" and continue to drive social change throughout the Southern Cone. In Patagonia, you will meet with Indigenous and environmental activists and learn about the Movimiento de Mujeres Indígenas por el Buen Vivir. In Budapest, you will learn about advocacy and policy change in an illiberal democracy and analyze the dynamics of activism in the European Union. Your final semester involves a professional practicum and capstone research in close consultation with your faculty advisor to ensure alignment with your personal career goals.

*\*Accreditation pending*

“

Graduates will have a broad, cross-cultural understanding of social justice, a type of knowledge and sensitivity that today's world requires.

”

**ANA LAURA LOBO**

*Associate Chair*







### SAMPLE CAREER PATHS

Nonprofit and NGO Management  
Community Organizing  
Public Policy Analysis  
Political Campaigns  
Social Entrepreneurship



### HALLMARK COURSES

Digital Activism and Advocacy:  
Actions for Social Justice  
Critical Approaches to Activism,  
Advocacy, and Policy Change  
Socio-Environmental Conflicts and  
Alternatives to Neo-Extractivism  
Citizenship in Southeast Europe:  
Divided Societies and Unequal Cities  
Social Justice, Rights, and  
Advocacy in Argentina



### SAMPLE RESEARCH AREAS

Racial Justice and Indigenous Rights  
Social Movements as Civic Engagement  
Democracy and Citizenship Rights after  
War or Dictatorship  
Digital Activism and Advocacy  
LGBTQ+ Rights, Gender Equality  
The Right for the City



### PROGRAM CHAIR

**Dr. Orli Fridman** holds a PhD from George Mason University's Carter School for Peace and Conflict Resolution. Her research focuses on peace studies and memory studies with an emphasis on comparative conflict studies. She is the author of *Memory Activism and Digital Practices after Conflict: Unwanted Memories* (Amsterdam University Press, 2022) and numerous journal articles and book chapters.



### ASSOCIATE CHAIR

**Ana Laura Lobo** has an MA in social investigation from the University of Buenos Aires (UBA). She completed doctoral work at UBA and the National University of San Martin, and postgraduate research at UBA's Gino Germani Research Institute. Her research interests include social justice and human rights, and social transformation using art and culture. She has been an adjunct professor for UNICEF and a lecturer at UBA. She teaches a Peace Culture and Human Rights seminar chaired by Nobel Peace Prize laureate Adolfo Perez Esquivel.





#### CRITICAL GLOBAL ISSUES

Development & Inequality



#### DURATION

12 months



#### CREDITS

36



#### INSTRUCTIONAL SITES

Quito, Ecuador  
Kampala, Uganda  
Lilongwe, Malawi  
Practicum



## GLOBAL MASTER'S SUSTAINABLE DEVELOPMENT PRACTICE

The complex and interconnected global challenges of widening economic inequality, health crises, natural resource degradation, climate change, and political and ethnic conflict demand a new generation of innovative and interdisciplinary practitioners focused on sustainable development practice. Grounded in experiential, place-based learning, the MA in Sustainable Development Practice prepares students for systemic, cross-cutting, and interdisciplinary thinking.

SIT's unique program draws on a multidisciplinary approach and integrates theory and practice as you explore authentic development challenges. Through rigorous academic training and immersive fieldwork in Ecuador, Uganda, and Malawi alongside experienced faculty, development practitioners, and local community members, the program bridges systems thinking and community-driven approaches to research, analytics, advocacy, and management. You will develop skills in participatory research, project design and implementation, project management, and monitoring and evaluation. Finally, you will build on SIT's longstanding global partnerships to complete your program with a field practicum that provides service to a host organization while fulfilling your academic requirements. As a graduate of this program, you'll be prepared to integrate policy, scholarship, ethics, participatory practice, capacity building, and lifelong learning to achieve sustainable development goals.

“

A new generation of innovative and multidisciplinary development practitioners is imperative to achieving equitable, just, and sustainable development.

”

**DR. JOSEPH LANNING**

*Program Chair*







### SAMPLE CAREER PATHS

Nonprofit and NGO Leadership and Management  
Food and Nutrition Security  
Monitoring and Evaluation  
Social Entrepreneurship  
Environmental Outreach



### HALLMARK COURSES

Policy or Grassroots Advocacy  
Gender and Development  
Water, Sanitation, Hygiene  
Forest Conservation  
Food Security



### SAMPLE PRACTICUMS

Culture and Development  
Sustainable Natural Resource Management  
Policy Advocacy and Social Change  
Economics for Sustainable Development  
Practitioner Inquiry



### PROGRAM CO-CHAIR

**Dr. Alyson Dagang** earned a BA in international development with an emphasis in Latin American studies at American University in Washington, DC, and a PhD in Agroforestry and Forest Conservation at University of Florida, Gainesville. Her research examined biophysical and socioeconomic aspects of wood and fruit tree repopulation in central Panama. Dr. Dagang was a Peace Corps volunteer in the Panamanian province of Panama Oeste. She has worked on projects focused on gender, agroforestry, sustainable agriculture, community development, environmental education, forestry, and conservation.



### PROGRAM CO-CHAIR

**Dr. Joseph Lanning** is an educator, practitioner, and researcher active in sustainable development and food systems with a regional focus on southern Africa. His recent collaborative research examined food insecurity and mental health among post-partum women in Malawi. Dr. Lanning has been involved in teaching agroecology in Malawi with the Zisinthe Farm and Community Garden, where he serves as a planning partner. He holds a PhD in anthropology from the University of Georgia. He has nearly two decades of experience teaching and managing undergraduate and graduate-level anthropology research methods.







**CRITICAL GLOBAL ISSUES**  
Identity & Human Resilience



**DURATION**  
24 months



**CREDITS**  
36



**INSTRUCTIONAL SITES**  
Brattleboro, Vermont  
Madrid, Granada, and  
Seville, Spain  
Online



“

We designed this hybrid degree program to offer working professionals an opportunity to build the skills and abilities needed to effectively deploy humanitarian and crisis management programs without having to leave their job or community.

”

**DR. BAYAN ABDULHAQ**

*Program Chair*

## PART-TIME HYBRID MASTER'S HUMANITARIAN ASSISTANCE AND CRISIS MANAGEMENT

Natural disasters are worsening with climate change and have compounded with violent conflicts, famines, and other global crises to produce complex emergencies and an unprecedented number of vulnerable communities worldwide.

Humanitarian action and crisis management professionals are needed now more than ever. Through this interdisciplinary program you will gain a foundation in the legal and professional principles and standards governing the field, as well as humanitarian program management and evaluation.

You will begin the program with a two-week residency on SIT's Vermont campus, where you will get to know your cohort and faculty. Through online study, you will then work closely with your cohort to advance your knowledge and skills. In your second year, a residency abroad will enable you to observe and participate in the design and implementation of humanitarian interventions through site visits and experiential learning activities. You will also have the opportunity to interact with aid workers and communities impacted by disasters.

In your final two semesters, you will complete a practicum and capstone project with a humanitarian aid or development organization. Through this experience, you will master ethically and culturally appropriate field practice and research skills.

You will leave the program ready to lead principled, inclusive, and professional interventions in a range of humanitarian sectors.





### SAMPLE CAREER PATHS

Crisis and Emergency Management  
Nonprofit and NGO Management  
Humanitarian Diplomacy and Advocacy  
Relief Work  
International Development



### HALLMARK COURSES

Issues in Humanitarian and Refugee Studies  
Humanitarian Policy, Diplomacy, and Advocacy  
Crisis Management and Leadership in Humanitarian Response  
International Humanitarian and Refugee Law, Standards, and Principles



### SAMPLE PRACTICUMS

Jordan Health Aid Society  
Tamkeen Legal Aid  
Asylum Protection Center



### PROGRAM CHAIR

**Dr. Bayan Abdulhaq** leads SIT's programs in refugee health and humanitarian action in Jordan, where she works with a large network of NGOs including Jordan River Foundation, Jordan Health Aid Society, and JOHUD to design learning opportunities and reciprocity projects. She has taught at the University of Jordan and the University of Petra and has extensive experience in educational quality assurance. She served as board member and executive director of AROQA and as a higher education consultant in Bahrain. She holds a PhD in pharmaceutical sciences from King's College London.



### PROGRAM CO-CHAIR

**Dr. Victor Tricot** received his PhD in political science from the University of Salamanca, applying social movements theories to indigenous movements in Chile and Argentina. He also studies political participation, formation of party systems, civil society and political representation, and cultural identity and social justice. Dr. Tricot has lectured in Spain, Chile, and the United States, and participated in academic projects on indigenous movements and political participation. He was previously academic director of SIT's program on cultural identity, social justice, and community development in Chile.





#### CRITICAL GLOBAL ISSUES

*Students may focus on any critical global issue, depending on their chosen curriculum.*



#### DURATION

24 months



#### CREDITS

33 minimum



#### INSTRUCTIONAL SITES

Brattleboro, Vermont  
Online



“

I have SIT and the ISLM program to thank for my current success. It has opened more doors than I could have ever imagined. I don't know anyone that wasn't deeply affected by their experience at SIT.

”

#### KELLY WISECARVER

*MA in Intercultural Service,  
Leadership, and Management*

*Information Management and  
Reports Manager, Federal Emergency  
Management Agency (FEMA)*

## PART-TIME HYBRID MASTER'S INTERCULTURAL SERVICE, LEADERSHIP, AND MANAGEMENT

Whether you want to advance your current career or pursue a new path, SIT's Intercultural Service, Leadership, and Management degree allows you to design your own program of study, selecting courses that focus on your professional development interest. You will work closely with a faculty advisor to select courses and a reflective practice that gives you the theoretical understanding of multiple perspectives and processes that bring about social change and a more just world.

You will develop analytical skills that focus on the interpersonal, team, community, and global arenas. You may choose to focus on aspects of the International Education, Sustainable Development, and Humanitarian Assistance and Crisis Management degree programs or a combination of these degrees including courses in TESOL.

You may specialize in program management, monitoring and evaluation, advocacy, or mediation.

Because of the interdisciplinary and individual choice within this degree, the skills you develop are based on your learning plan.







### SAMPLE CAREER PATHS

Diversity, Equity, and Inclusion  
Intercultural Training  
International Education Development  
Community Activism  
Environmental Justice  
Indigenous Rights



### HALLMARK COURSES

Foundations in Intercultural Service,  
Leadership, and Management  
Seminar in Applied Leadership  
Practitioner Inquiry  
Reflective Practice



### SAMPLE RESEARCH AREAS

Just Food Systems  
Refugee Resilience Building  
Accountability in White Anti-racism Organizing  
Teaching Language in Post-conflict Societies  
Music as a Cultural Gateway



### PROGRAM CHAIR

**Dr. Bruce W. Dayton** has been active in conflict transformation, crisis management, and leadership training for more than 20 years as a practitioner, researcher, and educator. His research interests include peacebuilding, mediation, dialogue, crisis management, and leadership. He has published numerous books and articles; has provided training to leaders in more than a dozen countries; and has designed and facilitated multi-stakeholder dialogues.

Dr. Dayton earned his PhD from Maxwell School of Citizenship and Public Affairs at Syracuse University, where he served as associate director of the Moynihan Institute of Global Affairs, research co-director of the Program for the Advancement of Research on Collaboration and Conflicts, and research professor. He chairs SIT's CONTACT Summer Peacebuilding Program.





## CRITICAL GLOBAL ISSUES

Education & Social Change



## DURATION

24 months



## CREDITS

36



## INSTRUCTIONAL SITES

Brattleboro, Vermont  
Online



# PART-TIME HYBRID MASTER'S INTERNATIONAL EDUCATION

Intercultural understanding and competency are more important than ever for today's educators, who work with increasingly diverse populations and serve as leaders in their institutions and communities. With SIT's cohort-based program, you will become a skilled educator and administrator through a carefully designed combination of instruction, practice, analysis, and experience. Our part-time, hybrid format allows you to complete most of your coursework online so you can stay in your job and community.

Customize your program to fit the unique demands of your career and long-term professional goals by choosing from a variety of electives focused on leadership, language education, international development, humanitarian assistance and crisis management, and intercultural service. You may also conduct independent studies to advance your career objectives.

After getting to know your cohort during a foundational two-week residency in Vermont, you will develop new skills and knowledge through online studies for the remainder of the summer and into the spring. In your second year, you will reconvene with your cohort in Vermont for another brief summer residency. After studying online for the rest of summer and fall, you will complete your coursework that spring and present a capstone paper. Geared toward aspiring professionals in the field, a cornerstone of this program is reflective practice, which allows you to apply what you learn in your courses in the real world setting of your work.

By the end of the program, you will be prepared to meet the immense challenges of the international educator, positioning you for rapid advancement in the field.

“

[SIT] gave me the tools to enter a profession that, after my first week on the job, I realized is what I want to do for the rest of my life. SIT did an amazing job of preparing me to be successful at that.

”

## DUBOIS JENNINGS

*MA in International Education*

*Northeast Field Director,  
Institute for Study Abroad*







### SAMPLE CAREER PATHS

Exchange Program Management  
International Education Development  
Community Education  
Study Abroad Advising  
Immigration Regulations



### HALLMARK COURSES

International Education Theory,  
Practice, and Policy  
International Education Program  
Planning and Design  
Advanced Concepts in International Education  
Reflective Practice/Capstone



### SAMPLE RESEARCH AREAS

Effective Evaluation for Public  
Diplomacy Programming  
Refugee Perspectives on  
Transitioning to US Higher Education  
Elements of Successful Education  
Abroad STEM Programs  
Identifying Gaps in Resources for  
Education in Emergencies  
Incorporating Indigenous Ways of  
Knowing in Online Pedagogy



### PROGRAM CHAIR

**Dr. Sora Friedman** started working in international education in 1984, focusing on the preparation of new professionals, management training, exchange program management, public diplomacy, and international policy advocacy. She serves as a peer reviewer and consultant for journals and professional training programs. She is co-author of *Careers in International Education: A Guide for New Professionals*. She has chaired NAFSA's Teaching, Learning, and Scholarship Knowledge Community; served on NAFSA's New England regional chairstream; been a member of CISabroad's board of advisors; and chaired NAFSA's Trainer Corps and Training Coordination Subcommittee. In 2015, she received the NAFSA Region XI James Leck Award for Distinguished Service. She received her PhD in cultural studies from George Mason University.







#### CRITICAL GLOBAL ISSUES

Development & Inequality



#### DURATION

24 months



#### CREDITS

36



#### INSTRUCTIONAL SITES

Brattleboro, Vermont  
Kathmandu, Nepal  
Oaxaca, Mexico  
Online



“

Sustainable development has to have many definitions...There are thousands of communities who have their own needs, their own goals, and their own ways of meeting those needs...We need to be open to different definitions so that development can occur according to people, according to places, and according to local interpretations.

”

**DR. ALYSON DAGANG**

*Program Chair*

## PART-TIME HYBRID MASTER'S SUSTAINABLE DEVELOPMENT PRACTICE

The complex and interconnected global challenges of widening economic inequality, health crises, natural resource degradation, climate change, and political and ethnic conflict demand a new generation of innovative and interdisciplinary practitioners focused on sustainable development practice. Through this part-time hybrid MA program, you will explore innovative and regenerative solutions being developed around the world with professors from Asia, Latin America, Africa, and the United States. As a graduate of the program, you will have the skills to support societies, communities and ecologies in their quest to thrive.

SIT's unique program draws on a multidisciplinary approach and integrates theory and practice as you explore authentic development challenges. Combining online coursework with residencies in Vermont, Nepal, and Mexico, you will learn firsthand from practitioners and innovators about the successes and challenges involved in leading, organizing, and managing sustainable development projects without stepping off your career track. During the online portions of the program, you will apply your learning within your own job or community. You will develop skills in participatory research, project design and implementation, project management, and monitoring and evaluation. During the final semester, you will develop a research-based project aimed at solving a problem in your own community. Both flexible and immersive, this MA is designed to advance your leadership skills, critical analysis, and design thinking to address urgent challenges.





### SAMPLE CAREER PATHS

Nonprofit and NGO Leadership and Management  
Food and Nutrition Security  
Monitoring and Evaluation  
Social Entrepreneurship  
Environmental Outreach



### HALLMARK COURSES

Policy or Grassroots Advocacy  
Gender and Development  
Water, Sanitation, Hygiene  
Forest Conservation  
Food Security



### SAMPLE RESEARCH AREAS

Human Flourishing in the Anthropocene  
Agroecology and Food Systems  
Policy Advocacy and Social Change  
Economics for Sustainable Development  
Practitioner Inquiry



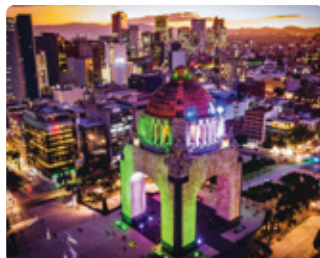
### PROGRAM CO-CHAIR

**Dr. Alyson Dagang** earned a BA in international development with an emphasis in Latin American studies at American University in Washington, DC, and a PhD in Agroforestry and Forest Conservation at University of Florida, Gainesville. Her research examined biophysical and socioeconomic aspects of wood and fruit tree repopulation in central Panama. Dr. Dagang was a Peace Corps volunteer in the Panamanian province of Panama Oeste. She has worked on projects focused on gender, agroforestry, sustainable agriculture, community development, environmental education, forestry, and conservation.



### PROGRAM CO-CHAIR

**Dr. Joseph Lanning** is an educator, practitioner, and researcher active in sustainable development and food systems with a regional focus on southern Africa. His recent collaborative research examined food insecurity and mental health among post-partum women in Malawi. Dr. Lanning has been involved in teaching agroecology in Malawi with the Zisinthe Farm and Community Garden, where he serves as a planning partner. He holds a PhD in anthropology from the University of Georgia. He has nearly two decades of experience teaching and managing undergraduate and graduate-level anthropology research methods.







### CRITICAL GLOBAL ISSUES

Education & Social Change



### DURATION

24 months



### CREDITS

34



### INSTRUCTIONAL SITES

Brattleboro, Vermont  
Online



## PART-TIME HYBRID MASTER'S TESOL

The world needs language teachers who serve learning and learners compassionately, understand the intercultural and identity dimensions of language, and model just and inclusive cultures in their classrooms. As English becomes a global language, teachers must be able to prepare their students to participate fully in a dynamic and changing world.

This program reflects the important recognition of multilingualism, linguistic and cultural diversity, and the use of plurilingual pedagogies to enhance learning. Backed by SIT's more than 50 years of expertise in this field and our broad network of talented alumni, the MA in TESOL (Teaching English to Speakers of Other Languages) program has been redesigned to address both the inner work of teaching in the classroom and the outer work of participation in communities of practice. You may choose to focus on one of four areas: teacher training, plurilingual pedagogy, teaching refugees and displaced persons, or teaching young learners.

This two-year, part-time program is designed for practicing teachers using their classrooms as laboratories for learning and reflection. It includes two three-week intensive summer sessions with your cohort on SIT's Vermont campus. The remainder of your coursework is online. A core program feature is the supervised practicum during which a faculty member visits your workplace for intensive mentorship and reflection.

“

SIT taught me about plurilingualism. Instead of pouring English into an empty mind, [SIT] advocates celebrating the diversity and values that each student brings to the classroom.

”

### SHINICHIRO MATSUGUMA

MA in TESOL

PhD, Positive Psychology, Tokyo, Japan







### SAMPLE CAREER PATHS

Language Teaching  
Teacher Training  
Curriculum Design  
Language School Development  
and Management



### PROGRAM CHAIR

**Dr. Leslie Turpin** began teaching with SIT's MA in Teaching programs in 1989 after teacher-training in refugee camps in Thailand. Her interests include refugee adjustment, cultural identity and memory, cultural and linguistic revitalization, reflective practice, classroom inquiry, literacy nonformal education, and teaching supervision. She received her PhD in integral studies at the California Institute for Integral Studies, where her research on intergenerational passing of cultural memory within a Laotian-American community led her to an exploration of the relationship between heritage culture/language vitality and the support of artists in a community. She has worked to support intercultural communication through the arts and is currently president of the board of the Vermont Folklife Center, a statewide organization committed to supporting Vermont's cultural diversity.



### HALLMARK COURSES

Developing an Approach to Teaching Languages  
Intercultural Communication and Ethnographic Inquiry for Language Educators  
Curriculum Design and Assessment  
Second Language Acquisition



### SAMPLE PRACTICUMS

Al Yamamah University in Saudi Arabia  
Access International School in Brazil  
EMBI Language School in Poland  
Roger Williams University in the United States  
World Education Thailand in Thailand





### CRITICAL GLOBAL ISSUES

Education & Social Change



### DURATION

36 months



### CREDITS

60



### INSTRUCTIONAL SITES

Brattleboro, Vermont  
Online



“

I strongly believe every student should be able to pursue their own intellectual interests and research topics knowing they will receive the support of their doctoral colleagues and advisor.

”

**DR. ALLA KORZH**

*Program Chair*

## PART-TIME HYBRID DOCTORATE (EdD) GLOBAL EDUCATION

Built on SIT's powerful experiential learning model, our intensive hybrid doctorate in global education (EdD) combines online coursework with short residencies in Vermont to fit the needs of professionals seeking to rapidly accelerate their career while tackling issues in global education, both locally and abroad.

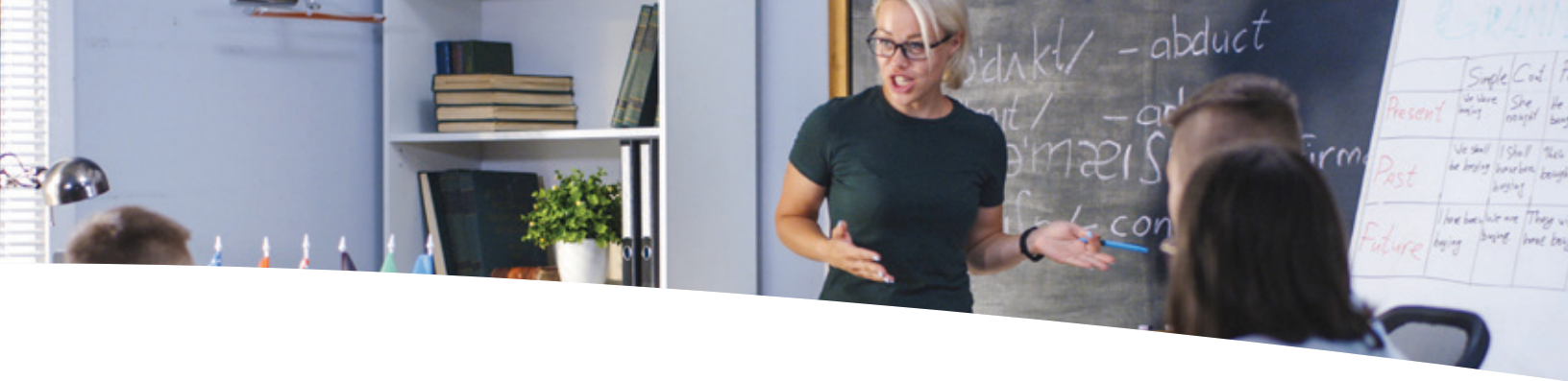
Drawing from SIT's unique brand of in-depth, reflective practice and intensive research training, this doctorate gives you the tools you need to excel in an increasingly diverse, competitive, and interdisciplinary field. Courses take place in person and online, with an estimated 10 to 15 hours of studies a week.

Begin with a three-week summer residency in Vermont, which will ground and orient you to your studies, and allow you to bond with students and faculty. You will return for two weeks the following summer, but otherwise work completely remotely.

Courses are immersive, with engaging doctoral seminars; case studies; theory; data collection; research methods; and reflective practice. Transfer up to 12 graduate credits from a relevant master's program. You will receive one-on-one guidance from an SIT advisor who will work closely with you on research topics of your choice. Present your doctoral defense in person or remotely.

This program is recommended for students with a passion for international work and education at any level, in any subfield, at any location. As a graduate of this program, you will be fully supported by SIT's global professional and alumni networks to advance to the top of your field as an international educator.





### SAMPLE CAREER PATHS

University Professor  
 Education Center Executive Director  
 NGO or Nonprofit Director of Programs  
 Education Administrator  
 Senior or Leadership Role in Academic Affairs



### HALLMARK COURSES

Theoretical Foundations  
 Research Methods  
 Reflective Practice Doctoral Seminar



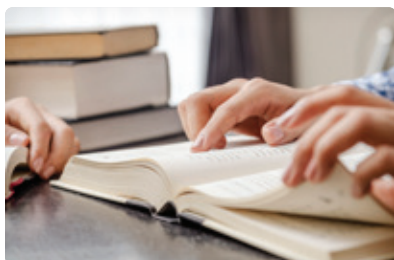
### DISSERTATION

Throughout the program, you will receive individualized guidance and instruction from your SIT advisor and your doctoral colleagues to help you formulate, write, and defend your dissertation on a research topic of your choosing.



### PROGRAM CHAIR

**Dr. Alla Korzh** teaches research methods, doctoral seminars, and capstone courses in the EdD and MA programs. Her research focuses on education inequities experienced by socio-economically disadvantaged children, youth, and adults at the secondary and post-secondary education levels. She has conducted qualitative research with orphans and incarcerated women in Ukraine, as well as formerly incarcerated women in New York City. Her earlier collaborative research project examined transnational young adults' participation in social movements and informal citizenship education. Her current research project investigates incarcerated women's educational aspirations in a minimum-security prison in Ukraine and the barriers they face post-incarceration.







#### CRITICAL GLOBAL ISSUES

Education & Social Change



#### DURATION

12 months



#### CREDITS

19



#### INSTRUCTIONAL SITES

Brattleboro, Vermont  
Online

## GRADUATE CERTIFICATE INTERNATIONAL EDUCATION

This program is popular with international education professionals who hold a master's degree in another field and want to increase their understanding of international education as well as with professionals who are only able to commit to one year of study.

The 19-credit curriculum follows the same sequence as the first year of our MA in International Education. Students may choose to continue with our part-time hybrid master's program after completing the certificate program.



#### SAMPLE CAREER PATHS

Exchange Program Management  
International Education Development  
Community Education  
Study Abroad Advising



#### HALLMARK COURSES

Theory and Practice of International Education  
International Education Program  
Planning and Design



“

My experience at SIT has helped me a lot in my current role working on democracy and governance programs with an international think tank and development agency.

”

#### STEFFEN KRUEGER

*Certificate in International Education*

*Country Director,  
Konrad Adenauer Foundation*





## PROFESSIONAL CERTIFICATE CONFLICT TRANSFORMATION ACROSS CULTURES (CONTACT)

Learn the core ideas and practices of conflict transformation in this one-week professional and academic training program led by a diverse group of internationally recognized faculty with years of applied, classroom, and research experience.

With other peacebuilders, you will explore how to bridge divides related to identity and ideology and how to analyze and build successful conflict transformation interventions.



### SKILLS

- Conflict Analysis and Transformation
- Mediation, Negotiation, and Dialogue
- Intercultural Communication
- Non-violent Social Action
- Peace Education



### CRITICAL GLOBAL ISSUES

- Peace & Justice
- Identity & Human Resilience



### DURATION

<1 month



### CREDITS

For-Credit Option Available



### INSTRUCTIONAL SITES

Brattleboro, Vermont



“

The CONTACT program has enabled us to play an active and positive role in the conflict dynamics that abound in our daily lives, at the personal, social, and community level.

”

**NUNGSHI AND TASHI MALIK**

*CONTACT Alumni*





#### CRITICAL GLOBAL ISSUES

Education & Social Change



#### DURATION

1-2 semesters



#### CREDITS

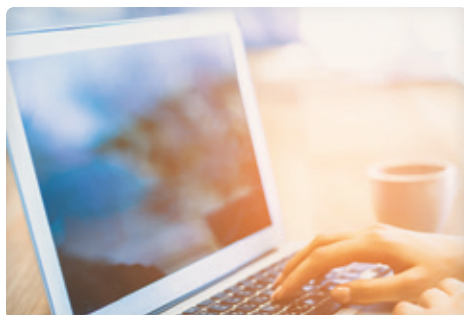
1-2 credits\*



#### INSTRUCTIONAL SITES

Online and various  
face-to-face locations  
as advertised

*\*Each course is 1 credit. Completion of both courses, which comprise the entire Professional Certification program, will result in 2 credits.*



“

SIT's new partnership with The Forum will enable students to gain an additional professional credential in the design, delivery, and management of education abroad programs from a leading professional association.

”

**SORA H. FRIEDMAN, PHD**

*Chair, MA in International Education*

## PROFESSIONAL CERTIFICATION IN EDUCATION ABROAD

SIT and The Forum on Education Abroad offer joint credentialing for The Forum's Professional Certification in Education Abroad program. This program is intended for students and professionals who want to certify their knowledge and expertise in the practice of education abroad. The program is structured around The Forum's Standards of Good Practice for Education Abroad.

SIT MA students can elect to take one or two elective courses of one credit each. With advance registration, successful completion of the two-credit sequence will result in awarding of The Forum's Professional Certification in Education Abroad. With advance registration, participants also may elect to earn graduate credit from SIT upon completion of each course.

Courses are designed to have practical application; each includes a series of modules based on the Standards of Good Practice and a culminating project.



#### SAMPLE TOPICS

Framing the Standards of Good Practice

Program Design

Program Management: From Implementation  
to Evaluation

Health, Safety, and Well-Being

Student Learning and Development

Individuals who complete the Certification are recognized on The Forum's website and may utilize The Forum's "Certified Professional" mark on resumes, curricula vitae, email signatures, business cards, letterhead and websites. Special recognition is also given at The Forum's Annual and European Conferences.

This program is offered on a rolling basis virtually, and occasionally via face-to-face workshops. Additional fees apply. Please visit SIT Graduate Institute ([graduate.sit.edu](http://graduate.sit.edu)) and The Forum on Education Abroad ([forumea.org/training-events/professional-certification-in-education-abroad](http://forumea.org/training-events/professional-certification-in-education-abroad)) for more details.





“ I’ve learned more from spending this year in other countries, seeing firsthand how a country must make hard decisions to close their borders to protect the health of their people or to keep their borders open to sustain their economies and keep their people fed, how a country’s limited resources can be stretched even more thinly during crises, and how easily systems fail, especially for countries that were already struggling.

”

**DANIELLE PURVIS**

*Global MA in Climate Change*



## ADMISSIONS

Our admissions staff work one-on-one with every applicant. We are committed to assisting you throughout the process, from initial inquiry to program enrollment.

### TO CONTACT ADMISSIONS:

Inside the US: 800 336-1616

Outside of the US: +1 802 258-3510

Email: [admissions@sit.edu](mailto:admissions@sit.edu)

You can also connect with SIT Graduate students and alumni through one of our Graduate Institute Ambassadors at [graduate.sit.edu/ambassadors](https://graduate.sit.edu/ambassadors). During summer residencies, you are welcome to visit campus, sit in on a class, and meet faculty and students.

## SCHOLARSHIPS AND FINANCIAL AID

SIT Graduate Institute is dedicated to providing financial aid to as many students as possible and to ensuring that you have the information you need to successfully access funding for your graduate education. We offer grants and scholarships based on several criteria, including financial need and demonstrated commitment to SIT's mission.

For more information on SIT's financial aid programs, including scholarships, grants, and federal student loans, please visit [graduate.sit.edu/financial-aid](https://graduate.sit.edu/financial-aid).

### FINANCIAL AID OPTIONS FOR U.S. STUDENTS AND PERMANENT RESIDENTS:

- SIT scholarships and grants
- Federal Direct Unsubsidized Student Loan
- Federal Direct Grad PLUS Loan

### FINANCIAL AID OPTIONS FOR INTERNATIONAL STUDENTS:

- SIT Scholarships and Grants

## MEET OUR RECRUITERS

Get to know SIT Graduate Institute through webinars and events that we host on campus and in cities near you. We participate in graduate school conferences throughout the year. Please stop by our booth so we can connect and answer your questions about graduate studies.

Please visit our website for more information: [graduate.sit.edu/admissions](https://graduate.sit.edu/admissions).

If you have questions about any event, please contact [university.relations@sit.edu](mailto:university.relations@sit.edu).



**Courtney Bauman**



**Jordan Byrne**



**Wanda Dutton**



**Karen Kray**



**Mory Pagel**



**Melissa Phineus**



**Shun Yanagishita**

**Notice of Nondiscrimination:** SIT does not discriminate on the basis of race, color, ethnic or national origin, sex, sexual orientation, gender identity, religion, age, ancestry, disability, military status, veteran status, or other non-merit reasons, in admissions, educational programs, or activities and employment, and complies with all applicable federal and state laws regarding nondiscrimination and affirmative action, including Title IX of the Education Amendments of 1972 and Section 504 of the Rehabilitation Act of 1973, and Title VII of the Civil Rights Act of 1964.

## AFFILIATIONS

### PARTNER SCHOLARSHIPS

SIT Graduate Institute has partnered with the following educational institutions and nonprofits to highlight the visions and shared values of both organizations. If you are an alum or a member of one of our affiliates, you may be eligible to receive a scholarship toward one of our master's degree programs. For more information, please visit [graduate.sit.edu/affiliations](https://graduate.sit.edu/affiliations).



### MEMBERSHIPS

SIT belongs to a network of membership organizations that share our social justice values, align with our mission, and help guide our decisions through continual communication and collaboration.















**SIT** SCHOOL FOR  
INTERNATIONAL  
TRAINING  
**GRADUATE INSTITUTE**

**TOLL-FREE WITHIN THE US**

800 336-1616

**OUTSIDE THE US**

+1 802 258-3510

info@sit.edu

1 Kipling Road  
Brattleboro, VT 05302-0676



**World Learning Inc.**

**THE WORLD LEARNING INC. FAMILY**

**SIT GRADUATE INSTITUTE** Offering graduate degrees and certificate programs focused on the world's most critical global issues. [graduate.sit.edu](https://graduate.sit.edu) | **SIT STUDY ABROAD** Providing immersive summer and semester-long study abroad programs for undergraduates. [studyabroad.sit.edu](https://studyabroad.sit.edu) | **WORLD LEARNING** A global nonprofit working in more than 150 countries to create a more sustainable, peaceful, and just world through education, development, and exchange. [worldlearning.org](https://worldlearning.org) | **THE EXPERIMENT IN INTERNATIONAL LIVING** The nation's most experienced and respected provider of immersive study abroad for high school students. [experiment.org](https://experiment.org)



**GRADUATE.SIT.EDU**