

Master of Arts in Climate Change and Sustainability

Housing Information 2024-25

Table of Contents

GENERAL HOUSING INFORMATION.....	2
ICELAND	2
Housing - Residence Hall In Ísafjörður.....	2
How Is Housing Arranged?	2
How Do I Pay For Housing?.....	2
Access To Food.....	3
Accommodations During Field Visits.....	3
Photos Of Iceland Dormitory	3
TANZANIA-ZANZIBAR.....	4
Housing Option - Shared Apartments With SIT Graduate Students.....	4
How Is Housing Arranged?	4
How Do I Pay For Housing?.....	5
Access To Food.....	5
Accommodations During Field Visits.....	5
Zanzibar Photos	6

GENERAL HOUSING INFORMATION

Room and board are the responsibility of each graduate student, and costs are NOT included in the tuition. However, housing assistance is available through SIT. This document outlines preferred options, but students can find their own housing if preferred.

ICELAND

HOUSING - RESIDENCE HALL IN ÍSAFJÖRÐUR

ICELAND DORMITORY
\$900 USD per month + \$50 monthly housing fee (includes linen cleaning and end of semester cleaning)
Private Twin bedroom with bathroom and blanket - (toilet paper & towels, linens, and duvet cover not included)
10 meals are included (breakfast & lunch) Monday - Friday; students cook for themselves at the weekend
Students have access to laundry room and small kitchen with basic facilities for weekend cooking
Distance from program center - 10-minute walk
Smoking is not permitted in the rooms or on the premises
Overnight guests or guests after 11pm are not allowed unless previously registered with staff
3 Month Estimated budget for dormitory - \$2850

HOW IS HOUSING ARRANGED?

Staying in the resident hall is the best option for all students and SIT will make arrangements on your behalf.

HOW DO I PAY FOR HOUSING?

- Credit or debit card at the residence hall front desk or bank transfers
- If using a debit and/or credit card, contact your bank and/or credit card companies to unlock your card for your overseas stay, otherwise the company may consider transactions fraudulent and lock your card. You should also check the costs of international withdrawals, as these costs can be expensive.
- Renewing and receiving reissued credit/debit cards abroad can be expensive and inconvenient. Before you leave, please check the expiration dates on your cards to ensure that they will not expire while you are abroad. It is also very important that

you make photocopies of all your debit/credit card information and leave them with someone you trust in case your cards are lost or stolen.

- The Icelandic currency is the Icelandic krona (króna), abbreviated ISK. Using your credit card or debit card in Iceland is easy and highly recommended. While most things are available in Iceland, prices tend to be high: expect to pay at least twice the US price for most items. For instance, restaurant food, electronics, and English textbooks are particularly expensive.

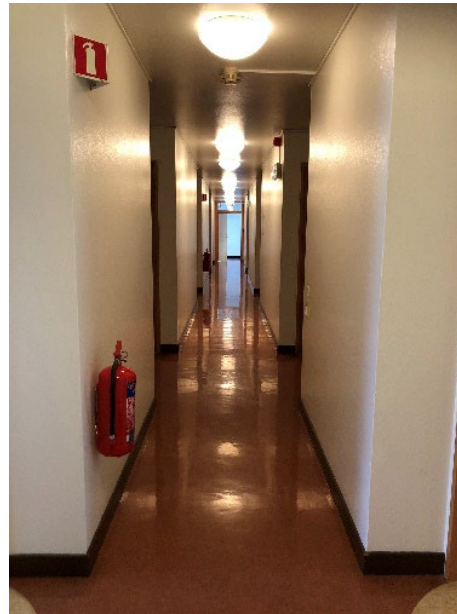
ACCESS TO FOOD

- The dormitory offers 10 hot meals per week, Monday through Friday.
- Diet consists mostly of seafood, grazing animals, and dairy products.
- Grocery stores offer a wide assortment of foods, though fruit and vegetables are likely to be expensive.

ACCOMMODATIONS DURING FIELD VISITS

- Students will share a dormitory or room with another classmate.
- Meals, accommodations, and transportation are covered by the program during field visits

PHOTOS OF ICELAND DORMITORY





TANZANIA-ZANZIBAR

HOUSING OPTION - SHARED APARTMENTS WITH SIT GRADUATE STUDENTS

ZANZIBAR APARTMENTS
\$450 to \$650 USD per month – utilities such as water and electricity sometimes included in the cost
2 to 3 bedrooms with kitchen and shared bathroom
\$30 for Wi-Fi monthly or dependent on usage rate
Students usually have access to a washing machine, but it is not guaranteed
Distance from program center – 5 to 15-minute walk
Smoking is not permitted in the apartments or on the premises
3 Month Estimated budget for apartment - \$1350-\$1950

HOW IS HOUSING ARRANGED?

It is not possible to reserve apartments in advance in Zanzibar. During orientation, the program director and housing coordinator will take students on a tour of the available options which they will then be able to secure by the end of the orientation depending on preference.

HOW DO I PAY FOR HOUSING?

- Payment for the full program period is required up front in cash.

ACCESS TO FOOD

- Staple foods include fish, rice, curry dishes, chicken, beans, lots of carbohydrates, and some fried food.
- Students can maintain a vegetarian diet, though eating salads and raw vegetables is not advised.
- Markets and grocery stores are accessible within a 15-minute walk from housing or via a short taxi ride.

ACCOMODATIONS DURING FIELD VISITS

Students will share a dormitory or room with another classmate & meals, accommodations, and transportation are covered by the program during field visits.

ZANZIBAR PHOTOS

